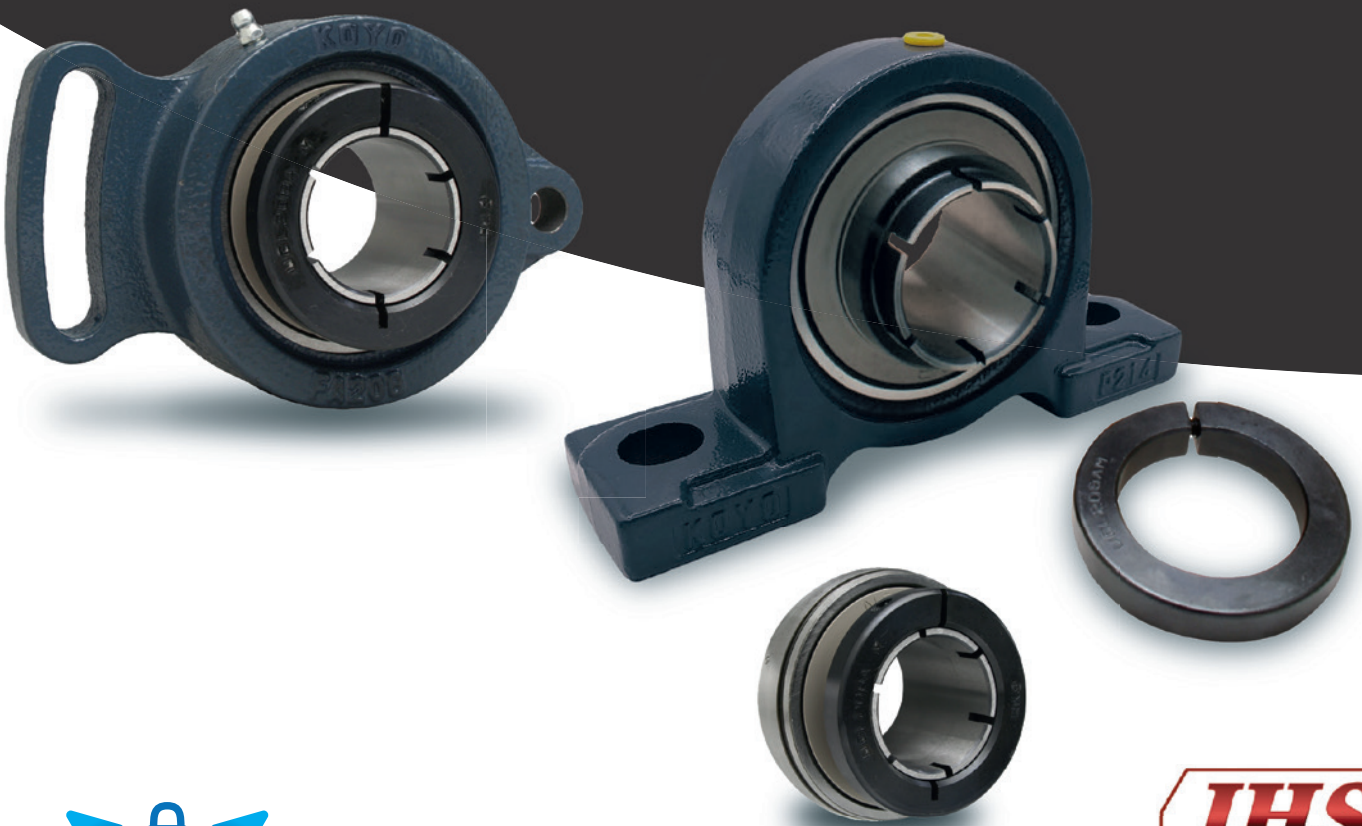


New

JTEKT



EasyFit NC-Ball Bearing Units

360° Clamping

EasyFit NC-Ball Bearing Units

3 Major Benefits

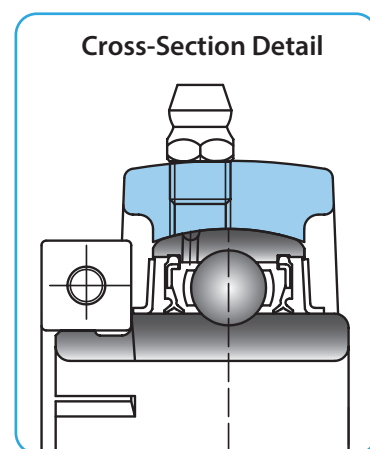
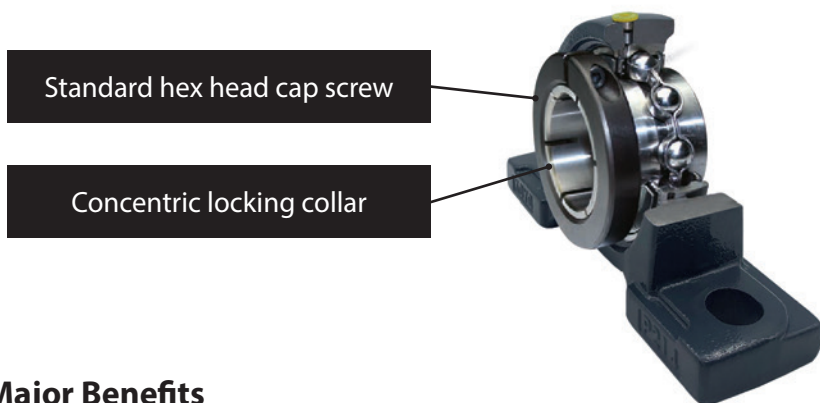
Easy Mounting

360° Clamping

Extending bearing life

Introduction

With the introduction of our new EasyFit NC-Ball Bearing Units (BBU's), we have been able to meet customer's needs to improve and shorten installation. Besides an easy installation, EasyFit NC BBU's will give a longer service life and an improved 360° clamping.



3 Major Benefits

1. Easy mounting

With Koyo's EasyFit NC BBU's the shaft can be mounted more easily and quickly. By tightening a standard hex head cap screw in the concentric locking collar a 360° circumferential fixation of the bearing inner ring to the shaft is provided.

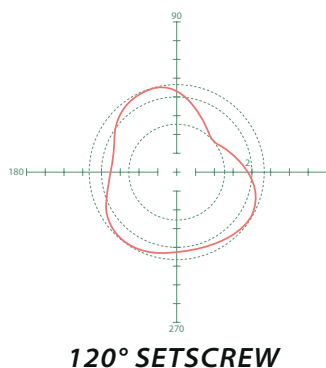
2. 360° clamping

The 360° clamping system avoids damages and markings on the shaft. At the same time it limits the deformation of the bearing ball raceway, resulting in reduced vibration and a more quiet operation at high speeds, compared with standard setscrew systems.

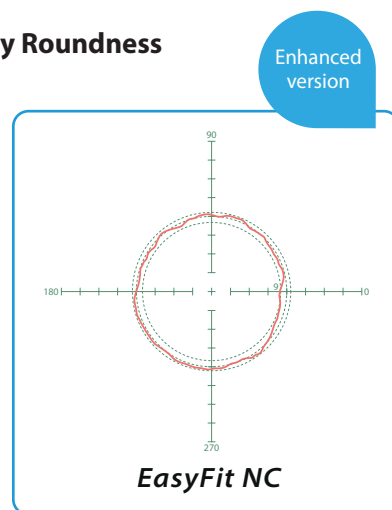
3. Extended bearing life

Optimized roundness of the ball raceway provides a smoother operation and also avoids bearing fretting and contributes to an increased bearing life.

Ball Raceway Roundness



120° SETSCREW



EasyFit NC

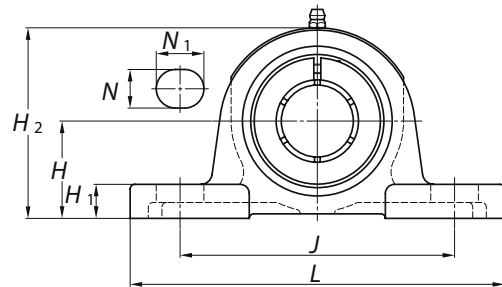
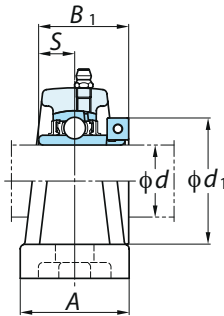
Note: The Recommended tightening torque is mentioned at the bottom of the specification tables.

Pillow type units EasyFit NC-Series

NCP

Cylindrical bore (with concentric locking collar)

d 20 ~ 60 mm



| Shaft Dia mm inch | Dimensions inch mm | | | | | | | | | | | Bolt Size inch mm | Unit No. | Housing No. | Bearing No. | Mass kg | |
|---------------------------------|--------------------------|---------|---------|---------|---------|-------|----------------|----------------|----------------|----------------|---------|----------------------------|---|----------------|---|------------|----------------|
| | d | H | L | A | J | N | N ₁ | H ₁ | H ₂ | B ₁ | S | | | | | | d ₁ |
| 20 3/4 | 1 5/16 | 5 | 1 1/2 | 3 3/4 | 1/2 | 23/32 | 1/2 | 2 17/32 | 1 9/32 | 1/2 | 1 3/4 | 3/8 | NCP204-12 NCP204 | P204 | NC204-12 NC204 | 0.80 | |
| | 33.3 | 127 | 38 | 95 | 13 | 18 | 16 | 65 | 32.5 | 12.7 | 44.5 | M10 | | | | | |
| 25 7/8 15/16 1 | 1 7/16 | 5 1/2 | 1 1/2 | 4 1/8 | 1/2 | 23/32 | 1/2 | 2 25/32 | 1 7/16 | 9/16 | 1 15/16 | 3/8 | NCP205-14 NCP205-15 NCP205 NCP205-16 | P205 | NC205-14 NC205-15 NC205 NC205-16 | 1.0 | |
| | 36.5 | 140 | 38 | 105 | 13 | 18 | 13 | 70 | 36.5 | 14.3 | 49.2 | M10 | | | | | |
| | 1 1/8 | 1 11/16 | 6 1/2 | 1 7/8 | 4 3/4 | 21/32 | 13/16 | 19/32 | 3 5/16 | 1 9/16 | 5/8 | 2 3/16 | | | | | 1/2 |
| 30 1 3/16 1 1/4 | 42.9 | 165 | 48 | 121 | 17 | 21 | 17 | 84 | 39.7 | 15.9 | 55.6 | M14 | NCP206-18 NCP206 NCP206-19 NCP206-20 | P206 | NC206-18 NC206 NC206-19 NC206-20 | 1.5 | |
| | 1 1/4 | 1 7/8 | 6 9/16 | 1 7/8 | 5 | 21/32 | 13/16 | 5/8 | 3 21/32 | 1 3/4 | 11/16 | 2 7/16 | | | | | 1/2 |
| 35 1 3/8 1 7/16 | 47.6 | 167 | 48 | 127 | 17 | 21 | 18 | 95 | 44.5 | 17.5 | 61.9 | M14 | NCP207-20 NCP207-22 NCP207 NCP207-23 | P207 | NC207-20 NC207-22 NC207 NC207-23 | 1.9 | |
| | 1 3/8 | 1 7/8 | 6 9/16 | 1 7/8 | 5 | 21/32 | 13/16 | 5/8 | 3 21/32 | 1 3/4 | 11/16 | 2 9/16 | | | | | 1/2 |
| | 1 7/16 | 47.6 | 167 | 48 | 127 | 17 | 21 | 18 | 95 | 44.5 | 17.5 | 65.1 | | | | | M14 |
| 40 1 1/2 | 1 15/16 | 7 1/4 | 2 1/8 | 5 13/32 | 21/32 | 13/16 | 21/32 | 3 27/32 | 2 | 3/4 | 2 11/16 | 1/2 | NCP208-24 NCP208 | P208 | NC208-24 NC208 | 2.4 | |
| | 49.2 | 184 | 54 | 137 | 17 | 21 | 18 | 98 | 50.8 | 19 | 68.3 | M14 | | | | | |
| 45 1 5/8 1 11/16 1 3/4 | 2 1/8 | 7 15/32 | 2 1/8 | 5 3/4 | 21/32 | 13/16 | 21/32 | 4 3/16 | 2 | 3/4 | 2 13/16 | 1/2 | NCP209-26 NCP209-27 NCP209-28 NCP209 | P209 | NC209-26 NC209-27 NC209-28 NC209 | 2.6 | |
| | 54 | 190 | 54 | 146 | 17 | 21 | 20 | 106 | 50.8 | 19 | 71.4 | M14 | | | | | |
| | 1 11/16 | 2 1/8 | 7 15/32 | 2 1/8 | 5 3/4 | 21/32 | 13/16 | 21/32 | 4 3/16 | 2 | 3/4 | 2 15/16 | | | | | 1/2 |
| 50 2 | 54 | 190 | 54 | 146 | 17 | 21 | 20 | 106 | 50.8 | 19 | 74.6 | M14 | NCP210-31 NCP210 NCP210-32 | P210 | NC210-31 NC210 NC210-32 | 3.5 | |
| | 1 15/16 | 2 1/4 | 8 1/8 | 2 3/8 | 6 1/4 | 25/32 | 7/8 | 3/4 | 4 7/16 | 2 3/32 | 3/4 | 3 3/8 | | | | | 5/8 |
| 55 2 2 3/16 | 57.2 | 206 | 60 | 159 | 20 | 22 | 21 | 113 | 53.1 | 19 | 85.7 | M16 | NCP211-32 NCP211 NCP211-35 | P211 | NC211-32 NC211 NC211-35 | 4.0 | |
| | 2 | 2 1/2 | 8 5/8 | 2 3/8 | 6 23/32 | 25/32 | 7/8 | 3/4 | 4 29/32 | 2 1/4 | 7/8 | 3 1/2 | | | | | 5/8 |
| | 2 3/16 | 63.5 | 219 | 60 | 171 | 20 | 22 | 23 | 125 | 57.1 | 22.2 | 88.9 | | | | | M16 |
| 60 2 1/4 2 3/4 | 63.5 | 219 | 60 | 171 | 20 | 22 | 23 | 125 | 57.1 | 22.2 | 92.1 | M16 | NCP212-36 NCP212 NCP212-39 | P212 | NC212-36 NC212 NC212-39 | 5.6 | |
| | 2 1/4 | 2 3/4 | 9 1/2 | 2 3/4 | 7 1/4 | 25/32 | 31/32 | 7/8 | 5 7/16 | 2 5/8 | 1 | 4 1/16 | | | | | 5/8 |
| | 2 3/4 | 69.8 | 241 | 70 | 184 | 20 | 25 | 25 | 138 | 66.7 | 25.4 | 103.2 | | | | | M16 |
| 60 2 7/16 | 2 3/4 | 9 1/2 | 2 3/4 | 7 1/4 | 25/32 | 31/32 | 7/8 | 5 7/16 | 2 5/8 | 1 | 4 1/8 | 5/8 | NCP212 NCP212-39 | P212 | NC212 NC212-39 | 5.6 | |
| | 2 7/16 | 69.8 | 241 | 70 | 184 | 20 | 25 | 25 | 138 | 66.7 | 25.4 | 104.8 | | | | | M16 |

Cap Screw Tightening Torque (recommended)

| Bore diam. | Cap Srew size | Recommended N-m | Max. N-m |
|------------|-----------------------|-----------------|----------|
| 20 - 30 mm | M4 x0,7 or No.8-32UNC | 4,2 - 4,6 | 4,9 |
| 35 - 45 mm | M5x0,8 or No.10-24UNC | 8,8 - 9,8 | 10 |
| 50 - 55 mm | M6 x1 or 1/4-20UNC | 15,2 - 16,8 | 17 |
| 60 mm | M8x1,25 or 5/16-18UNC | 38 - 42 | 44 |

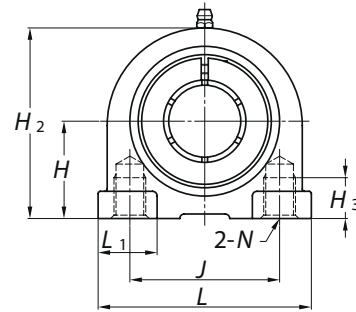
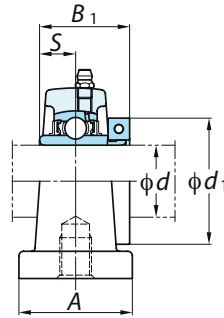
Note

- See our general BBU catalogue No BS006EN-ODS for more technical information.
- For the NC series steel and cast iron covers are not applicable.
- Special grease filling only on inquiry basis.

Formerly sold as



Tapped-base pillow type units EasyFit NC-Series
NCPA
Cylindrical bore (with concentric locking collar)
d 20 ~ 50 mm



| Shaft Dia mm inch | Dimensions inch mm | | | | | | | | | | | Unit No. | Housing No. | Bearing No. | Mass kg |
|--|--------------------------|--------------------|--------------------|--------------------|----------|--------------------|-----------------------|-----------------------|-----------------------|-----------------------|--------------------|---|----------------|---|------------|
| | <i>d</i> | <i>H</i> | <i>L</i> | <i>A</i> | <i>J</i> | <i>N</i> | <i>H</i> ₂ | <i>H</i> ₃ | <i>L</i> ₁ | <i>B</i> ₁ | <i>S</i> | | | | |
| 20 ^{3/4} | ^{1 3/16} | ³ | ^{1 9/16} | ^{2 3/64} | | ^{2 3/8} | ^{1/2} | ^{1 1/16} | ^{1 9/32} | ^{0 1/2} | ^{1 3/4} | NCPA204-12 NCPA204 | PA204 | NC204-12 NC204 | 0.73 |
| | 30.2 | 76 | 40 | 52 | M10x1.5 | 60 | 13 | 27 | 32.5 | 12.7 | 44.5 | | | | |
| 25 ^{7/8} ^{15/16} | ^{1 7/16} | ^{3 5/16} | ^{1 25/32} | ^{2 13/64} | | ^{2 25/32} | ^{1/2} | ^{1 3/16} | ^{1 7/16} | ^{0 9/16} | ^{1 15/16} | NCPA205-14 NCPA205-15 NCPA205 NCPA205-16 | PA205 | NC205-14 NC205-15 NC205 NC205-16 | 1.0 |
| | 36.5 | 84 | 45 | 56 | M10x1.5 | 71 | 13 | 30 | 36.5 | 14.3 | 49.2 | | | | |
| | 1 | | | | | | | | | | | | | | |
| 30 ^{1 1/8} ^{1 3/16} ^{1 1/4} | ^{1 11/16} | ^{3 11/16} | ^{1 31/32} | ^{2 19/32} | | ^{3 5/16} | ^{23/32} | ^{1 13/32} | ^{1 9/16} | ^{0 5/8} | ^{2 3/16} | NCPA206-18 NCPA206 NCPA206-19 NCPA206-20 | PA206 | NC206-18 NC206 NC206-19 NC206-20 | 1.4 |
| | 42.9 | 94 | 50 | 66 | M14x2 | 84 | 18 | 36 | 39.7 | 15.9 | 55.6 | | | | |
| | | | | | | | | | | | | | | | |
| 35 ^{1 1/4} ^{1 3/8} ^{1 7/16} | ^{1 7/8} | ^{3 11/32} | ^{2 5/32} | ^{3 5/32} | | ^{3 21/32} | ^{25/32} | ^{1 5/8} | ^{1 3/4} | ^{0 11/16} | ^{2 7/16} | NCPA207-20 | PA207 | NC207-20 | 2.0 |
| | 47.6 | 110 | 55 | 80 | M14x2 | 93 | 20 | 41 | 44.5 | 17.5 | 61.9 | | | | |
| | | | | | | | | | | | | | | | |
| 35 ^{1 3/8} ^{1 7/16} | ^{1 7/8} | ^{4 11/32} | ^{2 5/32} | ^{3 5/32} | | ^{3 21/32} | ^{25/32} | ^{1 5/8} | ^{1 3/4} | ^{0 11/16} | ^{2 9/16} | NCPA207-22 NCPA207 NCPA207-23 | PA207 | NC207-22 NC207 NC207-23 | 2.0 |
| | 47.6 | 110 | 55 | 80 | M14x2 | 93 | 20 | 41 | 44.5 | 17.5 | 65.1 | | | | |
| | | | | | | | | | | | | | | | |
| 40 ^{1 1/2} | ^{1 15/16} | ^{4 9/16} | ^{2 9/32} | ^{3 5/16} | | ^{3 27/32} | ^{25/32} | ^{1 5/8} | ² | ^{0 3/4} | ^{2 11/16} | NCPA208-24 NCPA208 | PA208 | NC208-24 NC208 | 2.4 |
| | 49.2 | 116 | 58 | 84 | M14x2 | 98 | 20 | 41 | 50.8 | 19 | 68.3 | | | | |
| | | | | | | | | | | | | | | | |
| 45 ^{1 5/8} ^{1 11/16} ^{1 3/4} | ^{2 9/64} | ^{4 23/32} | ^{2 3/8} | ^{3 35/64} | | ^{4 3/16} | ^{31/32} | ^{1 21/32} | ² | ^{0 3/4} | ^{2 13/16} | NCPA209-26 | PA209 | NC209-26 | 2.6 |
| | 54.2 | 120 | 60 | 90 | M14x2 | 106 | 25 | 42 | 50.8 | 19 | 71.4 | | | | |
| | | | | | | | | | | | | | | | |
| 45 ^{1 11/16} ^{1 3/4} | ^{2 9/64} | ^{4 23/32} | ^{2 3/8} | ^{3 35/64} | | ^{4 3/16} | ^{31/32} | ^{1 21/32} | ² | ^{0 3/4} | ^{2 15/16} | NCPA209-27 NCPA209-28 NCPA209 | PA209 | NC209-27 NC209-28 NC209 | 2.6 |
| | 54.2 | 120 | 60 | 90 | M14x2 | 106 | 25 | 42 | 50.8 | 19 | 74.6 | | | | |
| | | | | | | | | | | | | | | | |
| 50 ^{1 15/16} ² | ^{2 1/4} | ^{5 1/8} | ^{2 17/32} | ^{3 45/64} | | ^{4 7/16} | ^{31/32} | ^{1 27/32} | ^{2 3/32} | ^{0 3/4} | ^{3 3/8} | NCPA210-31 NCPA210 NCPA210-32 | PA210 | NC210-31 NC210 NC210-32 | 3.4 |
| | 57.2 | 130 | 64 | 94 | M16x2 | 113 | 25 | 47 | 53.1 | 19 | 85.7 | | | | |
| | 2 | | | | | | | | | | | | | | |

Cap Screw Tightening Torque (recommended)

| Bore diam. | Cap Screw size | Recommended N-m | Max. N-m |
|------------|-----------------------|-----------------|----------|
| 20 - 30 mm | M4 x0,7 or No.8-32UNC | 4,2 - 4,6 | 4,9 |
| 35 - 45 mm | M5x0,8 or No.10-24UNC | 8,8 - 9,8 | 10 |
| 50 - 55 mm | M6 x1 or 1/4-20UNC | 15,2 - 16,8 | 17 |
| 60 mm | M8x1,25 or 5/16-18UNC | 38 - 42 | 44 |

Note

- See our general BBU catalogue No BS006EN-ODS for more technical information.
- For the NC series steel and cast iron covers are not applicable.
- Special grease filling only on inquiry basis.

Formerly sold as

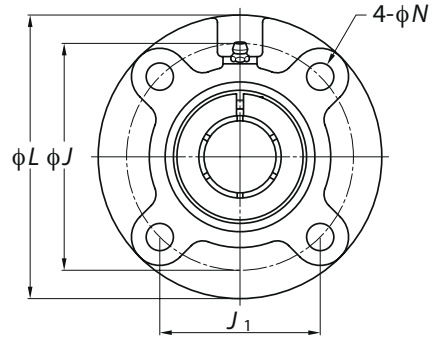
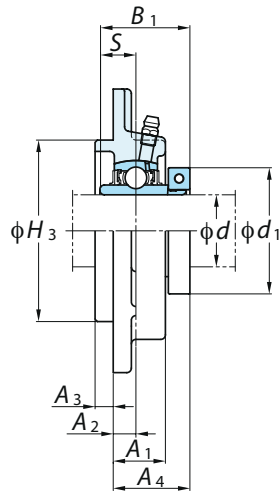


Round flange cartridge type units EasyFit NC-Series

NCFC

Cylindrical bore (with concentric locking collar)

d 20 ~ 60 mm



| Shaft Dia mm inch | Dimensions inch mm | | | | | | | | | | | | Bolt Size inch mm | Unit No. | Housing No. | Bearing No. | Mass kg |
|-------------------------|--------------------------|----------------|---------|----------------|---------|----------------|----------------|----------------|----------------|----------------|--------|----------------|----------------------------|---|----------------|---|------------|
| | L | H ₃ | J | J ₁ | N | A ₁ | A ₂ | A ₃ | A ₄ | B ₁ | S | d ₁ | | | | | |
| 20 3/4 | 3 15/16 | 2 7/16 | 3 5/64 | 2 11/64 | 15/32 | 13/16 | 25/64 | 13/64 | 1 3/16 | 1 9/32 | 0 1/2 | 1 3/4 | 3/8 | NCFC204-12 NCFC204 | FC204 | NC204-12 NC204 | 0.87 |
| | 100 | 62 | 78 | 55.1 | 12 | 20.5 | 10 | 5 | 29.8 | 32.5 | 12.7 | 44.5 | M10 | | | | |
| 25 7/8 15/16 1 | 4 17/32 | 2 3/4 | 3 35/64 | 2 1/2 | 15/32 | 13/16 | 25/64 | 15/64 | 1 9/32 | 1 7/16 | 0 9/16 | 1 15/16 | 3/8 | NCFC205-14 NCFC205-15 NCFC205 NCFC205-16 | FC205 | NC205-14 NC205-15 NC205 NC205-16 | 1.2 |
| | 115 | 70 | 90 | 63.6 | 12 | 21 | 10 | 6 | 32.2 | 36.5 | 14.3 | 49.2 | M10 | | | | |
| | 1 1/8 | 4 29/32 | 3 5/32 | 3 15/16 | 2 25/32 | 15/32 | 29/32 | 25/64 | 5/16 | 1 11/32 | 1 9/16 | 0 5/8 | 2 3/16 | | | | |
| 30 1 3/16 1 1/4 | 125 | 80 | 100 | 70.7 | 12 | 23 | 10 | 8 | 33.8 | 39.7 | 15.9 | 55.6 | M10 | NCFC206-18 NCFC206 NCFC206-19 NCFC206-20 | FC206 | NC206-18 NC206 NC206-19 NC206-20 | 1.5 |
| | 1 1/4 | 5 5/16 | 3 35/64 | 4 21/64 | 3 1/16 | 35/64 | 1 1/32 | 7/16 | 5/16 | 1 1/2 | 1 3/4 | 0 11/16 | 2 7/16 | | | | |
| 35 1 3/8 1 7/16 | 135 | 90 | 110 | 77.8 | 14 | 26 | 11 | 8 | 38 | 44.5 | 17.5 | 61.9 | M12 | NCFC207-20 NCFC207-22 NCFC207 NCFC207-23 | FC207 | NC207-20 NC207-22 NC207 NC207-23 | 2.0 2.0 |
| | 1 7/16 | 5 5/16 | 3 35/64 | 4 21/64 | 3 1/16 | 35/64 | 1 1/32 | 7/16 | 5/16 | 1 1/2 | 1 3/4 | 0 11/16 | 2 9/16 | | | | |
| 40 1 1/2 | 145 | 100 | 120 | 84.8 | 14 | 26 | 11 | 10 | 42.8 | 50.8 | 19 | 68.3 | M12 | NCFC208-24 NCFC208 | FC208 | NC208-24 NC208 | 2.4 |
| 1 5/8 | 6 5/16 | 4 9/64 | 5 13/64 | 3 43/64 | 5/8 | 1 1/32 | 25/64 | 15/32 | 2 1/32 | 2 | 0 3/4 | 2 13/16 | 1/2 | | | | |
| 45 1 11/16 1 3/4 | 160 | 105 | 132 | 93.3 | 16 | 26 | 10 | 12 | 41.8 | 50.8 | 19 | 71.4 | M14 | NCFC209-26 NCFC209-27 NCFC209-28 NCFC209 | FC209 | NC209-26 NC209-27 NC209-28 NC209 | 3.0 3.0 |
| | 1 11/16 | 6 5/16 | 4 9/64 | 5 13/64 | 3 43/64 | 5/8 | 1 1/32 | 25/64 | 15/32 | 2 1/32 | 2 | 0 3/4 | 2 15/16 | | | | |
| 50 2 | 165 | 110 | 138 | 97.6 | 16 | 28 | 10 | 12 | 44.1 | 53.1 | 19 | 85.7 | M14 | NCFC210-31 NCFC210 NCFC210-32 | FC210 | NC210-31 NC210 NC210-32 | 3.5 |
| | 2 | 7 9/32 | 4 59/64 | 5 29/32 | 4 11/64 | 3/4 | 1 7/32 | 33/64 | 15/32 | 1 7/8 | 2 1/4 | 0 7/8 | 3 1/2 | | | | |
| 55 2 3/16 | 185 | 125 | 150 | 106.1 | 19 | 31 | 13 | 12 | 47.9 | 57.1 | 22.2 | 88.9 | M16 | NCFC211-32 NCFC211 NCFC211-35 | FC211 | NC211-32 NC211 NC211-35 | 4.6 4.6 |
| | 2 3/16 | 7 9/32 | 4 59/64 | 5 29/32 | 4 11/64 | 3/4 | 1 7/32 | 33/64 | 15/32 | 1 7/8 | 2 1/4 | 0 7/8 | 3 5/8 | | | | |
| 60 2 1/4 2 7/16 | 195 | 135 | 160 | 113.1 | 19 | 36 | 17 | 12 | 58.3 | 66.7 | 25.4 | 103.2 | M16 | NCFC212-36 NCFC212 NCFC212-39 | FC212 | NC212-36 NC212 NC212-39 | 5.7 5.7 |
| | 2 7/16 | 7 11/16 | 5 5/16 | 6 19/64 | 4 29/64 | 3/4 | 1 13/32 | 43/64 | 15/32 | 2 9/32 | 2 5/8 | 1 | 4 1/8 | | | | |

Cap Screw Tightening Torque (recommended)

| Bore diam. | Cap Srew size | Recommended N-m | Max. N-m |
|------------|-----------------------|-----------------|----------|
| 20 - 30 mm | M4 x0,7 or No.8-32UNC | 4,2 - 4,6 | 4,9 |
| 35 - 45 mm | M5x0,8 or No.10-24UNC | 8,8 - 9,8 | 10 |
| 50 - 55 mm | M6 x1 or 1/4-20UNC | 15,2 - 16,8 | 17 |
| 60 mm | M8x1,25 or 5/16-18UNC | 38 - 42 | 44 |

Note

- See our general BBU catalogue No BS006EN-ODS for more technical information.
- For the NC series steel and cast iron covers are not applicable.
- Special grease filling only on inquiry basis.

Formerly sold as



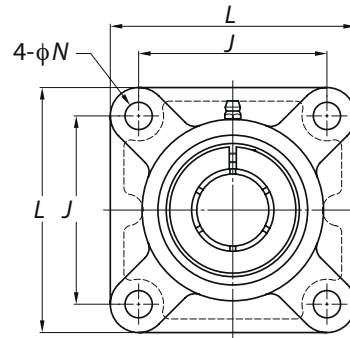
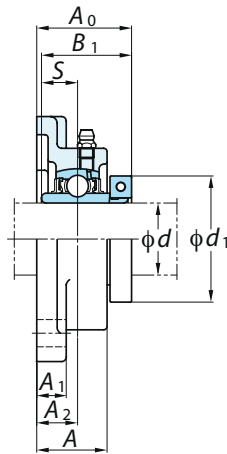
Square four-bolt flange type units EasyFit NC-Series



NCF

Cylindrical bore (with concentric locking collar)

d 20 ~ 60 mm



| Shaft Dia mm inch | Dimensions inch mm | | | | | | | | | | | Bolt Size inch mm | Unit No. | Housing No. | Bearing No. | Mass kg |
|--------------------------------|--------------------------|---------|---------|---------|----------------|----------------|----------------|----------------|---------|----------------|---------|---|-------------|---|----------------|------------|
| | L | A | J | N | A ₁ | A ₂ | A ₀ | B ₁ | S | d ₁ | | | | | | |
| 20 3/4 | 3 3/8 | 1 | 2 33/64 | 15/32 | 7/16 | 19/32 | 1 3/8 | 1 9/32 | 0 1/2 | 1 3/4 | 3/8 | NCF204-12 NCF204 | F204 | NC204-12 NC204 | 0.73 | |
| | 86 | 25.5 | 64 | 12 | 11 | 15 | 34.8 | 32.5 | 12.7 | 44.5 | M10 | | | | | |
| 25 7/8 15/16 1 | 3 3/4 | 1 1/16 | 2 3/4 | 15/32 | 1/2 | 5/8 | 1 1/2 | 1 7/16 | 0 9/16 | 1 15/16 | 3/8 | NCF205-14 NCF205-15 NCF205 NCF205-16 | F205 | NC205-14 NC205-15 NC205 NC205-16 | 1.0 | |
| | 95 | 27 | 70 | 12 | 13 | 16 | 38.2 | 36.5 | 14.3 | 49.2 | M10 | | | | | |
| | 1 1/8 | 4 1/4 | 1 7/32 | 3 17/64 | 15/32 | 1/2 | 45/64 | 1 21/32 | 1 9/16 | 0 5/8 | 2 3/16 | | | | | 3/8 |
| 1 3/16 | 108 | 31 | 83 | 12 | 13 | 18 | 41.8 | 39.7 | 15.9 | 55.6 | M10 | | | | | |
| 30 1 1/8 1 3/16 1 1/4 | 4 1/4 | 1 7/32 | 3 17/64 | 15/32 | 1/2 | 45/64 | 1 21/32 | 1 9/16 | 0 5/8 | 2 3/16 | 3/8 | NCF207-20 NCF207 NCF207-22 NCF207-23 | F207 | NC207-20 NC207 NC207-22 NC207-23 | 1.8 | |
| | 1 1/4 | 4 19/32 | 1 11/32 | 3 5/8 | 35/64 | 19/32 | 3/4 | 1 13/16 | 1 3/4 | 0 11/16 | 2 7/16 | | | | | 7/16 |
| | 1 3/8 | 117 | 34 | 92 | 14 | 15 | 19 | 46 | 44.5 | 17.5 | 61.9 | | | | | M12 |
| 35 1 3/8 1 7/16 | 4 19/32 | 1 11/32 | 3 5/8 | 35/64 | 19/32 | 3/4 | 1 13/16 | 1 3/4 | 0 11/16 | 2 9/16 | 7/16 | NCF207-22 NCF207 NCF207-23 | F207 | NC207-22 NC207 NC207-23 | 1.8 | |
| | 1 7/16 | 117 | 34 | 92 | 14 | 15 | 19 | 46 | 44.5 | 17.5 | 65.1 | | | | | M12 |
| | 1 1/2 | 5 1/8 | 1 13/32 | 4 1/64 | 5/8 | 19/32 | 53/64 | 2 3/32 | 2 | 0 3/4 | 2 11/16 | | | | | 1/2 |
| 1 5/8 | 130 | 36 | 102 | 16 | 15 | 21 | 52.8 | 50.8 | 19 | 68.3 | M14 | | | | | |
| 40 1 1/2 1 5/8 1 3/4 | 5 13/32 | 1 1/2 | 4 9/64 | 5/8 | 5/8 | 55/64 | 2 1/8 | 2 | 0 3/4 | 2 13/16 | 1/2 | NCF209-26 NCF209-27 NCF209-28 NCF209 | F209 | NC209-26 NC209-27 NC209-28 NC209 | 2.6 | |
| | 1 3/4 | 137 | 38 | 105 | 16 | 16 | 22 | 53.8 | 50.8 | 19 | 71.4 | | | | | M14 |
| | 1 11/16 | 5 13/32 | 1 1/2 | 4 9/64 | 5/8 | 5/8 | 55/64 | 2 1/8 | 2 | 0 3/4 | 2 15/16 | | | | | 1/2 |
| 45 1 11/16 1 3/4 | 137 | 38 | 105 | 16 | 16 | 22 | 53.8 | 50.8 | 19 | 74.6 | M14 | NCF209-27 NCF209-28 NCF209 | F209 | NC209-27 NC209-28 NC209 | 2.6 | |
| | 1 15/16 | 5 5/8 | 1 9/16 | 4 3/8 | 5/8 | 5/8 | 55/64 | 2 7/32 | 2 3/32 | 0 3/4 | 3 3/8 | | | | | 1/2 |
| | 2 | 143 | 40 | 111 | 16 | 16 | 22 | 56.1 | 53.1 | 19 | 85.7 | M14 | | | | |
| 50 1 15/16 2 | 6 3/8 | 1 11/16 | 5 1/8 | 3/4 | 23/32 | 63/64 | 2 11/32 | 2 1/4 | 0 7/8 | 3 1/2 | 5/8 | NCF210-31 NCF210 NCF210-32 | F210 | NC210-31 NC210 NC210-32 | 3.1 | |
| | 2 | 162 | 43 | 130 | 19 | 18 | 25 | 59.9 | 57.1 | 22.2 | 88.9 | | | | | M16 |
| | 2 3/16 | 6 3/8 | 1 11/16 | 5 1/8 | 3/4 | 23/32 | 63/64 | 2 11/32 | 2 1/4 | 0 7/8 | 3 5/8 | | | | | 5/8 |
| 55 2 3/16 | 162 | 43 | 130 | 19 | 18 | 25 | 59.9 | 57.1 | 22.2 | 92.1 | M16 | NCF211 NCF211-35 | F211 | NC211 NC211-35 | 3.8 | |
| | 2 1/4 | 6 7/8 | 1 7/8 | 5 5/8 | 3/4 | 23/32 | 1 9/64 | 2 25/32 | 2 5/8 | 1 | 4 1/16 | | | | | 5/8 |
| | 2 7/16 | 175 | 48 | 143 | 19 | 18 | 29 | 70.3 | 66.7 | 25.4 | 103.2 | M16 | | | | |
| 60 2 1/4 2 7/16 | 6 7/8 | 1 7/8 | 5 5/8 | 3/4 | 23/32 | 1 9/64 | 2 25/32 | 2 5/8 | 1 | 4 1/8 | 5/8 | NCF212-36 NCF212 | F212 | NC212-36 NC212 | 4.9 | |
| | 2 7/16 | 175 | 48 | 143 | 19 | 18 | 29 | 70.3 | 66.7 | 25.4 | 104.8 | | | | | M16 |

Cap Screw Tightening Torque (recommended)

| Bore diam. | Cap Screw size | Recommended N-m | Max. N-m |
|------------|-----------------------|-----------------|----------|
| 20 - 30 mm | M4 x0,7 or No.8-32UNC | 4,2 - 4,6 | 4,9 |
| 35 - 45 mm | M5x0,8 or No.10-24UNC | 8,8 - 9,8 | 10 |
| 50 - 55 mm | M6 x1 or 1/4-20UNC | 15,2 - 16,8 | 17 |
| 60 mm | M8x1,25 or 5/16-18UNC | 38 - 42 | 44 |

Note

- See our general BBU catalogue No BS006EN-ODS for more technical information.
- For the NC series steel and cast iron covers are not applicable.
- Special grease filling only on inquiry basis.

Formerly sold as



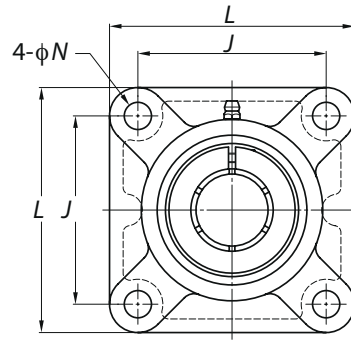
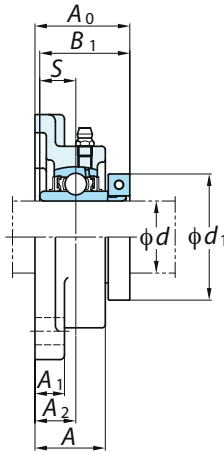
Square four-bolt flange type units EasyFit NC-Series



NCF-E

Cylindrical bore (with concentric locking collar)

d 20 ~ 60 mm



| Shaft Dia mm inch | Dimensions inch mm | | | | | | | | | | | Bolt Size inch mm | Unit No. | Housing No. | Bearing No. | Mass kg |
|---------------------------------|--------------------------|---------|---------|-------|----------------|----------------|----------------|----------------|---------|----------------|------|---|-------------|---|----------------|------------|
| | L | A | J | N | A ₁ | A ₂ | A ₀ | B ₁ | S | d ₁ | | | | | | |
| 20 3/4 | 3 3/8 | 1 | 2 33/64 | 7/16 | 7/16 | 19/32 | 1 3/8 | 1 9/32 | 0 1/2 | 1 3/4 | 3/8 | NCF204-12E NCF204E | F204E | NC204-12 NC204 | 0.73 | |
| | 86 | 25.5 | 64 | 11 | 11 | 15 | 34.8 | 32.5 | 12.7 | 44.5 | M10 | | | | | |
| 25 7/8 15/16 1 | 3 3/4 | 1 1/16 | 2 3/4 | 15/32 | 1/2 | 5/8 | 1 1/2 | 1 7/16 | 0 9/16 | 1 15/16 | 3/8 | NCF205-14 NCF205-15 NCF205 NCF205-16 | F205* | NC205-14 NC205-15 NC205 NC205-16 | 1.0 | |
| | 95 | 27 | 70 | 12 | 13 | 16 | 38.2 | 36.5 | 14.3 | 49.2 | M10 | | | | | |
| | 108 | 31 | 83 | 13 | 13 | 18 | 41.8 | 39.7 | 15.9 | 55.6 | M12 | | | | | |
| 30 1 1/8 1 3/16 1 1/4 | 4 1/4 | 1 7/32 | 3 17/64 | 33/64 | 1/2 | 45/64 | 1 21/32 | 1 9/16 | 0 5/8 | 2 3/16 | 7/16 | NCF206-18E NCF206E NCF206-19E NCF206-20E | F206E | NC206-18 NC206 NC206-19 NC206-20 | 1.3 | |
| | 117 | 34 | 92 | 13 | 15 | 19 | 46 | 44.5 | 17.5 | 61.9 | M12 | | | | | |
| | 117 | 34 | 92 | 13 | 15 | 19 | 46 | 44.5 | 17.5 | 65.1 | M12 | | | | | |
| 35 1 1/4 1 3/8 1 7/16 | 4 19/32 | 1 11/32 | 3 5/8 | 33/64 | 19/32 | 3/4 | 1 13/16 | 1 3/4 | 0 11/16 | 2 7/16 | 7/16 | NCF207-20E NCF207-22E NCF207E NCF207-23E | F207E | NC207-20 NC207-22 NC207 NC207-23 | 1.8 | |
| | 117 | 34 | 92 | 13 | 15 | 19 | 46 | 44.5 | 17.5 | 65.1 | M12 | | | | | |
| | 117 | 34 | 92 | 13 | 15 | 19 | 46 | 44.5 | 17.5 | 65.1 | M12 | | | | | |
| 40 1 1/2 | 5 1/8 | 1 13/32 | 4 1/64 | 35/64 | 19/32 | 53/64 | 2 3/32 | 2 | 0 3/4 | 2 11/16 | 1/2 | NCF208-24E NCF208E | F208E | NC208-24 NC208 | 2.3 | |
| | 130 | 36 | 102 | 14 | 15 | 21 | 52.8 | 50.8 | 19 | 68.3 | M14 | | | | | |
| 45 1 5/8 1 11/16 1 3/4 | 5 13/32 | 1 1/2 | 4 9/64 | 5/8 | 5/8 | 55/64 | 2 1/8 | 2 | 0 3/4 | 2 13/16 | 1/2 | NCF209-26 NCF209-27 NCF209-28 NCF209 | F209* | NC209-26 NC209-27 NC209-28 NC209 | 2.6 | |
| | 137 | 38 | 105 | 16 | 16 | 22 | 53.8 | 50.8 | 19 | 71.4 | M14 | | | | | |
| | 137 | 38 | 105 | 16 | 16 | 22 | 53.8 | 50.8 | 19 | 74.6 | M14 | | | | | |
| 50 1 15/16 2 | 5 5/8 | 1 9/16 | 4 3/8 | 5/8 | 5/8 | 55/64 | 2 7/32 | 2 3/32 | 0 3/4 | 3 3/8 | 1/2 | NCF210-31 NCF210 NCF210-32 | F210* | NC210-31 NC210 NC210-32 | 3.1 | |
| | 143 | 40 | 111 | 16 | 16 | 22 | 56.1 | 53.1 | 19 | 85.7 | M14 | | | | | |
| | 143 | 40 | 111 | 16 | 16 | 22 | 56.1 | 53.1 | 19 | 85.7 | M14 | | | | | |
| 55 2 2 3/16 | 6 3/8 | 1 11/16 | 5 1/8 | 43/64 | 23/32 | 63/64 | 2 11/32 | 2 1/4 | 0 7/8 | 3 1/2 | 5/8 | NCF211-32E NCF211E NCF211-35E | F211E | NC211-32 NC211 NC211-35 | 3.8 | |
| | 162 | 43 | 130 | 17 | 18 | 25 | 59.9 | 57.1 | 22.2 | 88.9 | M16 | | | | | |
| | 162 | 43 | 130 | 17 | 18 | 25 | 59.9 | 57.1 | 22.2 | 92.1 | M16 | | | | | |
| 60 2 1/4 2 7/16 | 6 7/8 | 1 7/8 | 5 5/8 | 43/64 | 23/32 | 1 9/64 | 2 25/32 | 2 5/8 | 1 | 4 1/16 | 5/8 | NCF212-36E NCF212E NCF212-39E | F212E | NC212-36 NC212 NC212-39 | 4.9 | |
| | 175 | 48 | 143 | 17 | 18 | 29 | 70.3 | 66.7 | 25.4 | 103.2 | M16 | | | | | |
| | 175 | 48 | 143 | 17 | 18 | 29 | 70.3 | 66.7 | 25.4 | 104.8 | M16 | | | | | |

* = Standard F-housing

Cap Screw Tightening Torque (recommended)

| Bore diam. | Cap Srew size | Recommended N-m | Max. N-m |
|------------|-----------------------|-----------------|----------|
| 20 - 30 mm | M4 x0,7 or No.8-32UNC | 4,2 - 4,6 | 4,9 |
| 35 - 45 mm | M5x0,8 or No.10-24UNC | 8,8 - 9,8 | 10 |
| 50 - 55 mm | M6 x1 or 1/4-20UNC | 15,2 - 16,8 | 17 |
| 60 mm | M8x1,25 or 5/16-18UNC | 38 - 42 | 44 |

Note

- See our general BBU catalogue No BS006EN-ODS for more technical information.
- For the NC series steel and cast iron covers are not applicable.
- Special grease filling only on inquiry basis.

Formerly sold as

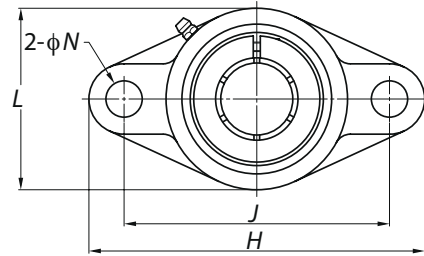
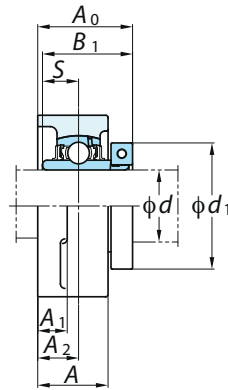


Rhombic flange type units EasyFit NC-Series

NCFL

Cylindrical bore (with concentric locking collar)

d 20 ~ 60 mm



| Shaft Dia mm inch | Dimensions inch mm | | | | | | | | | | | Bolt Size inch mm | Unit No. | Housing No. | Bearing No. | Mass kg |
|---------------------------------|--------------------------|---------|---------|---------|---------|----------------|----------------|----------------|----------------|---------|----------------|----------------------------|---|----------------|---|------------|
| | H | L | A | J | N | A ₁ | A ₂ | A ₀ | B ₁ | S | d ₁ | | | | | |
| 20 3/4 | 4 7/16 | 2 3/8 | 1 | 3 35/64 | 15/32 | 7/16 | 19/32 | 1 3/8 | 1 9/32 | 0 1/2 | 1 3/4 | 3/8 | NCFL204-12 NCFL204 | FL204 | NC204-12 NC204 | 0.62 |
| | 113 | 60 | 25.5 | 90 | 12 | 11 | 15 | 34.8 | 32.5 | 12.7 | 44.5 | M10 | | | | |
| 25 7/8 15/16 1 | 5 1/8 | 2 11/16 | 1 1/16 | 3 57/64 | 5/8 | 1/2 | 5/8 | 1 1/2 | 1 7/16 | 0 9/16 | 1 15/16 | 1/2 | NCFL205-14 NCFL205-15 NCFL205 NCFL205-16 | FL205 | NC205-14 NC205-15 NC205 NC205-16 | 0.84 |
| | 130 | 68 | 27 | 99 | 16 | 13 | 16 | 38.2 | 36.5 | 14.3 | 49.2 | M14 | | | | |
| | 1 1/8 | 5 13/16 | 3 5/32 | 1 7/32 | 4 39/64 | 5/8 | 1/2 | 45/64 | 1 21/32 | 1 9/16 | 0 5/8 | 2 3/16 | | | | |
| 1 3/16 | 148 | 80 | 31 | 117 | 16 | 13 | 18 | 41.8 | 39.7 | 15.9 | 55.6 | M14 | | | | |
| 30 1 1/4 1 1/4 | 6 11/32 | 3 17/32 | 1 11/32 | 5 1/8 | 5/8 | 9/16 | 3/4 | 1 13/16 | 1 3/4 | 0 11/16 | 2 7/16 | 1/2 | NCFL207-20 | FL207 | NC207-20 | 1.5 |
| | 161 | 90 | 34 | 130 | 16 | 14 | 19 | 46 | 44.5 | 17.5 | 61.9 | M14 | | | | |
| | 1 3/8 | 6 11/32 | 3 17/32 | 1 11/32 | 5 1/8 | 5/8 | 9/16 | 3/4 | 1 13/16 | 1 3/4 | 0 11/16 | 2 9/16 | | | | |
| 1 7/16 | 161 | 90 | 34 | 130 | 16 | 14 | 19 | 46 | 44.5 | 17.5 | 65.1 | M14 | | | | |
| 40 1 1/2 | 6 7/8 | 3 15/16 | 1 13/32 | 5 43/64 | 5/8 | 9/16 | 53/64 | 2 3/32 | 2 | 0 3/4 | 2 11/16 | 1/2 | NCFL208-24 NCFL208 | FL208 | NC208-24 NC208 | 2.0 |
| | 175 | 100 | 36 | 144 | 16 | 14 | 21 | 52.8 | 50.8 | 19 | 68.3 | M14 | | | | |
| 45 1 5/8 1 11/16 1 3/4 | 7 13/32 | 4 1/4 | 1 1/2 | 5 53/64 | 3/4 | 19/32 | 55/64 | 2 1/8 | 2 | 0 3/4 | 2 13/16 | 5/8 | NCFL209-26 | FL209 | NC209-26 | 2.3 |
| | 188 | 108 | 38 | 148 | 19 | 15 | 22 | 53.8 | 50.8 | 19 | 71.4 | M16 | | | | |
| | 1 11/16 | 7 13/32 | 4 1/4 | 1 1/2 | 5 53/64 | 3/4 | 19/32 | 55/64 | 2 1/8 | 2 | 0 3/4 | 2 15/16 | | | | |
| 1 3/4 | 188 | 108 | 38 | 148 | 19 | 15 | 22 | 53.8 | 50.8 | 19 | 74.6 | M16 | | | | |
| 50 1 15/16 2 | 7 3/4 | 4 17/32 | 1 9/16 | 6 3/16 | 3/4 | 19/32 | 55/64 | 2 7/32 | 2 3/32 | 0 3/4 | 3 3/8 | 5/8 | NCFL210-31 NCFL210 NCFL210-32 | FL210 | NC210-31 NC210 NC210-32 | 2.8 |
| | 197 | 115 | 40 | 157 | 19 | 15 | 22 | 56.1 | 53.1 | 19 | 85.7 | M16 | | | | |
| | 2 | 8 13/16 | 5 1/8 | 1 11/16 | 7 1/4 | 3/4 | 23/32 | 63/64 | 2 11/32 | 2 1/4 | 0 7/8 | 3 1/2 | | | | |
| 224 | 130 | 43 | 184 | 19 | 18 | 25 | 59.9 | 57.1 | 22.2 | 88.9 | M16 | | | | | |
| 55 2 3/16 | 8 13/16 | 5 1/8 | 1 11/16 | 7 1/4 | 3/4 | 23/32 | 63/64 | 2 11/32 | 2 1/4 | 0 7/8 | 3 5/8 | 5/8 | NCFL211 NCFL211-35 | FL211 | NC211 NC211-35 | 3.7 |
| | 224 | 130 | 43 | 184 | 19 | 18 | 25 | 59.9 | 57.1 | 22.2 | 92.1 | M16 | | | | |
| 60 2 1/4 2 7/16 | 9 27/32 | 5 1/2 | 1 7/8 | 7 61/64 | 29/32 | 23/32 | 1 9/64 | 2 25/32 | 2 5/8 | 1 | 4 1/16 | 3/4 | NCFL212-36 | FL212 | NC212-36 | 4.9 |
| | 250 | 140 | 48 | 202 | 23 | 18 | 29 | 70.3 | 66.7 | 25.4 | 103.2 | M20 | | | | |
| | 2 7/16 | 9 27/32 | 5 1/2 | 1 7/8 | 7 61/64 | 29/32 | 23/32 | 1 9/64 | 2 25/32 | 2 5/8 | 1 | 4 1/8 | | | | |
| 250 | 140 | 48 | 202 | 23 | 18 | 29 | 70.3 | 66.7 | 25.4 | 104.8 | M20 | | | | | |

Cap Screw Tightening Torque (recommended)

| Bore diam. | Cap Screw size | Recommended N-m | Max. N-m |
|------------|-----------------------|-----------------|----------|
| 20 - 30 mm | M4 x0,7 or No.8-32UNC | 4,2 - 4,6 | 4,9 |
| 35 - 45 mm | M5x0,8 or No.10-24UNC | 8,8 - 9,8 | 10 |
| 50 - 55 mm | M6 x1 or 1/4-20UNC | 15,2 - 16,8 | 17 |
| 60 mm | M8x1,25 or 5/16-18UNC | 38 - 42 | 44 |

Note

- See our general BBU catalogue No BS006EN-ODS for more technical information.
- For the NC series steel and cast iron covers are not applicable.
- Special grease filling only on inquiry basis.

Formerly sold as

Koyo

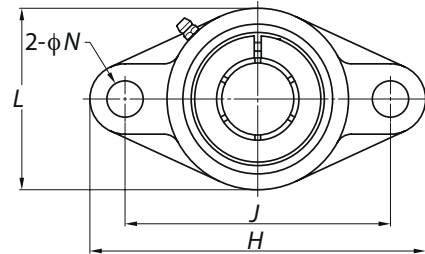
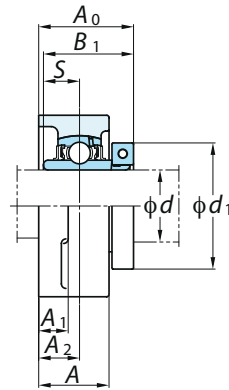
Rhombic flange type units EasyFit NC-Series



NCFL-E

Cylindrical bore (with concentric locking collar)

d 20 ~ 60 mm



| Shaft Dia mm inch | Dimensions inch mm | | | | | | | | | | | Bolt Size inch | Unit No. | Housing No. | Bearing No. | Mass kg |
|-------------------------|--------------------------|---------|---------|---------|---------|----------------|----------------|----------------|----------------|---------|----------------|----------------------|---|----------------|---|------------|
| | H | L | A | J | N | A ₁ | A ₂ | A ₀ | B ₁ | S | d ₁ | | | | | |
| 20 3/4 | 4 7/16 | 2 3/8 | 1 | 3 17/32 | 25/64 | 7/16 | 19/32 | 1 3/8 | 1 9/32 | 0 1/2 | 1 3/4 | 5/16 | NCFL204-12E NCFL204E | FL204E | NC204-12 NC204 | 0.62 |
| | 113 | 60 | 25.5 | 89.7 | 10 | 11 | 15 | 34.8 | 32.5 | 12.7 | 44.5 | M8 | | | | |
| 25 7/8 15/16 1 | 5 1/8 | 2 11/16 | 1 1/16 | 3 57/64 | 15/32 | 1/2 | 5/8 | 1 1/2 | 1 7/16 | 0 9/16 | 1 15/16 | 3/8 | NCFL205-14E NCFL205-15E NCFL205E NCFL205-16E | FL205E | NC205-14 NC205-15 NC205 NC205-16 | 0.84 |
| | 130 | 68 | 27 | 98.8 | 12 | 13 | 16 | 38.2 | 36.5 | 14.3 | 49.2 | M10 | | | | |
| | 1 1/8 | 5 13/16 | 3 5/32 | 1 7/32 | 4 19/32 | 15/32 | 1/2 | 45/64 | 1 21/32 | 1 9/16 | 0 5/8 | 2 3/16 | | | | |
| 1 3/16 | 148 | 80 | 31 | 116.7 | 12 | 13 | 18 | 41.8 | 39.7 | 15.9 | 55.6 | M10 | | | | |
| 1 1/4 | 6 11/32 | 3 17/32 | 1 11/32 | 5 1/8 | 33/64 | 9/16 | 3/4 | 1 13/16 | 1 3/4 | 0 11/16 | 2 7/16 | 7/16 | NCFL207-20E NCFL207-22E NCFL207E NCFL207-23E | FL207E | NC207-20 NC207-22 NC207 NC207-23 | 1.5 |
| 1 1/4 | 161 | 90 | 34 | 130.2 | 13 | 14 | 19 | 46 | 44.5 | 17.5 | 61.9 | M12 | | | | |
| 1 3/8 | 6 11/32 | 3 17/32 | 1 11/32 | 5 1/8 | 33/64 | 9/16 | 3/4 | 1 13/16 | 1 3/4 | 0 11/16 | 2 9/16 | 7/16 | | | | |
| 1 7/16 | 161 | 90 | 34 | 130.2 | 13 | 14 | 19 | 46 | 44.5 | 17.5 | 65.1 | M12 | | | | |
| 1 1/2 | 6 7/8 | 3 15/16 | 1 13/32 | 5 21/32 | 33/64 | 9/16 | 53/64 | 2 3/32 | 2 | 0 3/4 | 2 11/16 | 7/16 | NCFL209-26E NCFL209-27E NCFL209-28E NCFL209E | FL209E | NC209-26 NC209-27 NC209-28 NC209 | 2.3 |
| 1 5/8 | 188 | 108 | 38 | 148.4 | 15 | 15 | 22 | 53.8 | 50.8 | 19 | 71.4 | 1/2 | | | | |
| 1 11/16 | 7 13/32 | 4 1/4 | 1 1/2 | 5 27/32 | 19/32 | 19/32 | 55/64 | 2 1/8 | 2 | 0 3/4 | 2 15/16 | 1/2 | | | | |
| 1 3/4 | 188 | 108 | 38 | 148.4 | 15 | 15 | 22 | 53.8 | 50.8 | 19 | 74.6 | M14 | | | | |
| 1 15/16 | 7 3/4 | 4 17/32 | 1 9/16 | 6 3/16 | 19/32 | 19/32 | 55/64 | 2 7/32 | 2 3/32 | 0 3/4 | 3 3/8 | 1/2 | NCFL211-32E NCFL211E NCFL211-35E | FL211E | NC211-32 NC211 NC211-35 | 3.7 |
| 2 | 224 | 130 | 43 | 184 | 16.5 | 18 | 25 | 59.9 | 57.1 | 22.2 | 88.9 | M14 | | | | |
| 2 3/16 | 8 13/16 | 5 1/8 | 1 11/16 | 7 1/4 | 21/32 | 23/32 | 63/64 | 2 11/32 | 2 1/4 | 0 7/8 | 3 5/8 | 9/16 | | | | |
| 2 1/4 | 250 | 140 | 48 | 202 | 16.5 | 18 | 29 | 70.3 | 66.7 | 25.4 | 103.2 | M14 | | | | |
| 2 7/16 | 250 | 140 | 48 | 202 | 16.5 | 18 | 29 | 70.3 | 66.7 | 25.4 | 104.8 | M14 | | | | |

Cap Screw Tightening Torque (recommended)

| Bore diam. | Cap Srew size | Recommended N-m | Max. N-m |
|------------|-----------------------|-----------------|----------|
| 20 - 30 mm | M4 x0,7 or No.8-32UNC | 4,2 - 4,6 | 4,9 |
| 35 - 45 mm | M5x0,8 or No.10-24UNC | 8,8 - 9,8 | 10 |
| 50 - 55 mm | M6 x1 or 1/4-20UNC | 15,2 - 16,8 | 17 |
| 60 mm | M8x1,25 or 5/16-18UNC | 38 - 42 | 44 |

Note

- See our general BBU catalogue No BS006EN-ODS for more technical information.
- For the NC series steel and cast iron covers are not applicable.
- Special grease filling only on inquiry basis.

Formerly sold as

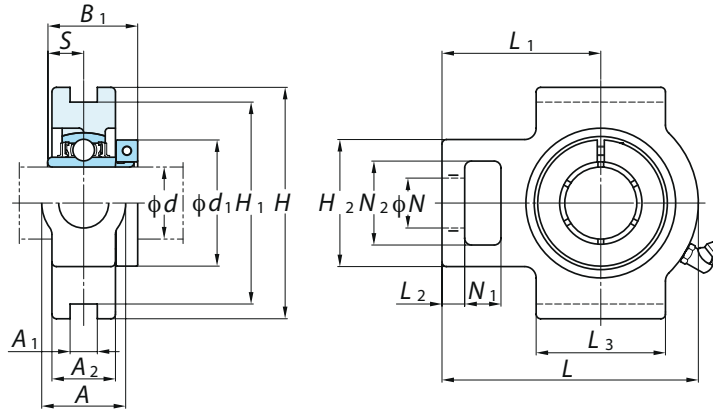


Take-up type units EasyFit NC-Series

NCT

Cylindrical bore (with concentric locking collar)

d 20 ~ 60 mm



| Shaft Dia mm inch | Dimensions inch mm | | | | | | | | | | | | | | | | Unit No. | Housing No. | Bearing No. | Mass kg |
|---------------------------------|--------------------------|-------|----------------|----------------|---------|----------------|----------------|---------|----------------|----------------|----------------|-------|----------------|----------------|----------------|---------|---|----------------|--|------------|
| | d | A | A ₁ | A ₂ | H | H ₁ | H ₂ | L | L ₁ | L ₂ | L ₃ | N | N ₁ | N ₂ | B ₁ | S | | | | |
| 20 3/4 | 1 1/4 | 15/32 | 13/16 | 3 1/2 | 2 63/64 | 2 | 3 11/16 | 2 13/32 | 13/32 | 2 | 3/4 | 5/8 | 1 1/4 | 1 9/32 | 0 1/2 | 1 3/4 | NCT204-12 NCT204 | T204 | NC204-12 NC204 | 0.90 |
| | 32 | 12 | 21 | 89 | 76 | 51 | 94 | 61 | 10 | 51 | 19 | 16 | 32 | 32.5 | 12.7 | 44.5 | | | | |
| 25 7/8 15/16 1 | 1 1/4 | 15/32 | 15/16 | 3 1/2 | 2 63/64 | 2 | 3 13/16 | 2 7/16 | 13/32 | 2 | 3/4 | 5/8 | 1 1/4 | 1 7/16 | 0 9/16 | 1 15/16 | NCT205-14 NCT205-15 NCT205 NCT205-16 | T205 | NC205-14 NC205-15 NC205 NC205-16 | 1.0 |
| | 32 | 12 | 24 | 89 | 76 | 51 | 97 | 62 | 10 | 51 | 19 | 16 | 32 | 36.5 | 14.3 | 49.2 | | | | |
| | | | | | | | | | | | | | | | | | | | | |
| 30 1 1/8 1 3/16 1 1/4 | 1 15/32 | 15/32 | 1 3/32 | 4 1/32 | 3 1/2 | 2 7/32 | 4 7/16 | 2 3/4 | 13/32 | 2 1/4 | 7/8 | 5/8 | 1 15/32 | 1 9/16 | 0 5/8 | 2 3/16 | NCT206-18 NCT206 NCT206-19 NCT206-20 | T206 | NC206-18 NC206 NC206-19 NC206-20 | 1.5 |
| | 37 | 12 | 28 | 102 | 89 | 56 | 113 | 70 | 10 | 57 | 22 | 16 | 37 | 39.7 | 15.9 | 55.6 | | | | |
| | | | | | | | | | | | | | | | | | | | | |
| 35 1 1/4 1 3/8 1 7/16 | 1 15/32 | 15/32 | 1 3/16 | 4 1/32 | 3 1/2 | 2 17/32 | 5 3/32 | 3 1/16 | 1/2 | 2 17/32 | 7/8 | 5/8 | 1 15/32 | 1 3/4 | 0 11/16 | 2 7/16 | NCT207-20 NCT207 NCT207-22 NCT207 NCT207-23 | T207 | NC207-20 NC207 NC207-22 NC207 NC207-23 | 1.9 |
| | 37 | 12 | 30 | 102 | 89 | 64 | 129 | 78 | 13 | 64 | 22 | 16 | 37 | 44.5 | 17.5 | 61.9 | | | | |
| | | | | | | | | | | | | | | | | | | | | |
| 40 1 1/2 | 1 15/16 | 5/8 | 1 5/16 | 4 1/2 | 4 1/64 | 3 9/32 | 5 21/32 | 3 15/32 | 19/32 | 3 9/32 | 1 5/32 | 3/4 | 1 15/16 | 2 | 0 3/4 | 2 11/16 | NCT208-24 NCT208 | T208 | NC208-24 NC208 | 2.9 |
| | 49 | 16 | 33 | 114 | 102 | 83 | 144 | 88 | 16 | 83 | 29 | 19 | 49 | 50.8 | 19 | 68.3 | | | | |
| 45 1 5/8 1 11/16 1 3/4 | 1 15/16 | 5/8 | 1 3/8 | 4 19/32 | 4 1/64 | 3 9/32 | 5 21/32 | 3 7/16 | 5/8 | 3 9/32 | 1 5/32 | 3/4 | 1 15/16 | 2 | 0 3/4 | 2 13/16 | NCT209-26 NCT209-27 NCT209-28 NCT209 | T209 | NC209-26 NC209-27 NC209-28 NC209 | 2.8 |
| | 49 | 16 | 35 | 117 | 102 | 83 | 144 | 87 | 16 | 83 | 29 | 19 | 49 | 50.8 | 19 | 71.4 | | | | |
| | | | | | | | | | | | | | | | | | | | | |
| 50 1 15/16 2 | 1 15/16 | 5/8 | 1 15/32 | 4 19/32 | 4 1/64 | 3 9/32 | 5 7/8 | 3 17/32 | 5/8 | 3 3/8 | 1 5/32 | 3/4 | 1 15/16 | 2 3/32 | 0 3/4 | 3 3/8 | NCT210-31 NCT210 NCT210-32 | T210 | NC210-31 NC210 NC210-32 | 3.2 |
| | 49 | 16 | 37 | 117 | 102 | 83 | 149 | 90 | 16 | 86 | 29 | 19 | 49 | 53.1 | 19 | 85.7 | | | | |
| | | | | | | | | | | | | | | | | | | | | |
| 55 2 2 3/16 | 2 17/32 | 55/64 | 1 1/2 | 5 3/4 | 5 1/8 | 4 1/32 | 6 23/32 | 4 3/16 | 3/4 | 3 3/4 | 1 3/8 | 31/32 | 2 17/32 | 2 1/4 | 0 7/8 | 3 1/2 | NCT211-32 NCT211 NCT211-35 | T211 | NC211-32 NC211 NC211-35 | 4.4 |
| | 64 | 22 | 38 | 146 | 130 | 102 | 171 | 106 | 19 | 95 | 35 | 25 | 64 | 57.1 | 22.2 | 88.9 | | | | |
| | | | | | | | | | | | | | | | | | | | | |
| 60 2 1/4 2 7/16 | 2 17/32 | 55/64 | 1 21/32 | 5 3/4 | 5 1/8 | 4 1/32 | 7 5/8 | 4 11/16 | 3/4 | 4 1/32 | 1 3/8 | 1 1/4 | 2 17/32 | 2 5/8 | 1 | 4 1/16 | NCT212-36 NCT212 NCT212-39 | T212 | NC212-36 NC212 NC212-39 | 5.6 |
| | 64 | 22 | 42 | 146 | 130 | 102 | 194 | 119 | 19 | 102 | 35 | 32 | 64 | 66.7 | 25.4 | 103.2 | | | | |
| | | | | | | | | | | | | | | | | | | | | |

Cap Screw Tightening Torque (recommended)

| Bore diam. | Cap Srew size | Recommended N-m | Max. N-m |
|------------|-----------------------|-----------------|----------|
| 20 - 30 mm | M4 x0,7 or No.8-32UNC | 4,2 - 4,6 | 4,9 |
| 35 - 45 mm | M5x0,8 or No.10-24UNC | 8,8 - 9,8 | 10 |
| 50 - 55 mm | M6 x1 or 1/4-20UNC | 15,2 - 16,8 | 17 |
| 60 mm | M8x1,25 or 5/16-18UNC | 38 - 42 | 44 |

Note

- See our general BBU catalogue No BS006EN-ODS for more technical information.
- For the NC series steel and cast iron covers are not applicable.
- Special grease filling only on inquiry basis.

Formerly sold as

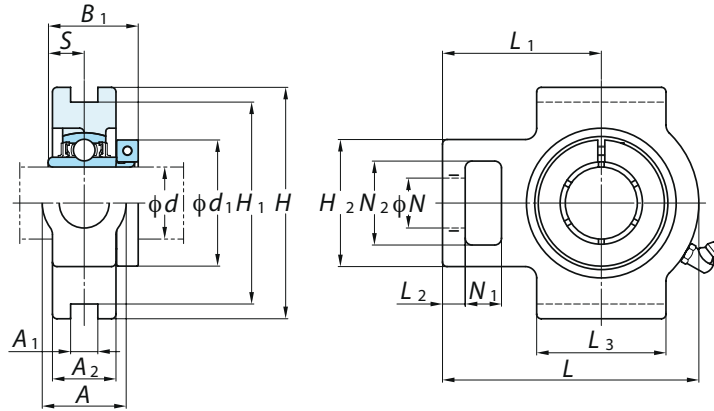


Take-up type units EasyFit NC-Series

NCT-E

Cylindrical bore (with concentric locking collar)

d 20 ~ 60 mm



| Shaft Dia mm inch | Dimensions inch mm | | | | | | | | | | | | | | | | | Unit No. | Housing No. | Bearing No. | Mass kg |
|--------------------------------|--------------------------|--------|----------------|----------------|--------|----------------|----------------|---------|----------------|----------------|----------------|-------|----------------|----------------|----------------|---------|----------------|----------|-------------------------------|-------------|------------|
| | d | A | A ₁ | A ₂ | H | H ₁ | H ₂ | L | L ₁ | L ₂ | L ₃ | N | N ₁ | N ₂ | B ₁ | S | d ₁ | | | | |
| 20 3/4 | 1 1/4 | 17/32 | 13/16 | 3 1/2 | 3 | 2 | 3 11/16 | 2 13/32 | 13/32 | 2 | 3/4 | 5/8 | 1 1/4 | 1 9/32 | 0 1/2 | 1 3/4 | NCT204-12E | T204E | NC204-12 NC204 | 0.90 | |
| | 32 | 13.5 | 21 | 89 | 76.2 | 51 | 94 | 61 | 10 | 51 | 19 | 16 | 32 | 32.5 | 12.7 | 44.5 | NCT204E | | | | |
| 25 7/8 15/16 1 | 1 1/4 | 17/32 | 15/16 | 3 1/2 | 3 | 2 | 3 13/16 | 2 7/16 | 13/32 | 2 | 3/4 | 5/8 | 1 1/4 | 1 7/16 | 0 9/16 | 1 15/16 | NCT205-14E | T205E | NC205-14 NC205-15 NC205 | 1.0 | |
| | 32 | 13.5 | 24 | 89 | 76.2 | 51 | 97 | 62 | 10 | 51 | 19 | 16 | 32 | 36.5 | 14.3 | 49.2 | NCT205-15E | | | | |
| | | | | | | | | | | | | | | | | | | | | | NCT205E |
| 30 1 1/8 1 3/16 1 1/4 | 1 15/32 | 17/32 | 1 3/16 | 4 1/32 | 3 1/2 | 2 7/32 | 4 7/16 | 2 3/4 | 13/32 | 2 1/4 | 7/8 | 5/8 | 1 15/32 | 1 9/16 | 0 5/8 | 2 3/16 | NCT206-18E | T206E | NC206-18 NC206 | 1.5 | |
| | 37 | 13.5 | 28 | 102 | 88.9 | 56 | 113 | 70 | 10 | 57 | 22 | 16 | 37 | 39.7 | 15.9 | 55.6 | NCT206E | | | | |
| | | | | | | | | | | | | | | | | | | | | | NCT206-19E |
| 35 1 1/4 1 3/8 1 7/16 | 1 15/32 | 17/32 | 1 3/16 | 4 1/32 | 3 1/2 | 2 17/32 | 5 3/32 | 3 1/16 | 1/2 | 2 17/32 | 7/8 | 5/8 | 1 15/32 | 1 3/4 | 0 11/16 | 2 7/16 | NCT207-20E | T207E | NC207-20 | 1.9 | |
| | 37 | 13.5 | 30 | 102 | 88.9 | 64 | 129 | 78 | 13 | 64 | 22 | 16 | 37 | 44.5 | 17.5 | 61.9 | NCT207-22E | | | | |
| | | | | | | | | | | | | | | | | | | | | | NCT207E |
| 40 1 1/2 1 5/8 | 1 15/16 | 11/16 | 1 5/16 | 4 1/2 | 4 | 3 9/32 | 5 21/32 | 3 15/32 | 5/8 | 3 9/32 | 1 5/32 | 3/4 | 1 15/16 | 2 | 0 3/4 | 2 11/16 | NCT208-24E | T208E | NC208-24 NC208 | 2.9 | |
| | 49 | 17.5 | 33 | 114 | 101.6 | 83 | 144 | 88 | 16 | 83 | 29 | 19 | 49 | 50.8 | 19 | 68.3 | NCT208E | | | | |
| | | | | | | | | | | | | | | | | | | | | | NCT209-26E |
| 45 1 11/16 1 3/4 | 1 15/16 | 11/16 | 1 3/8 | 4 19/32 | 4 | 3 9/32 | 5 21/32 | 3 7/16 | 5/8 | 3 9/32 | 1 5/32 | 3/4 | 1 15/16 | 2 | 0 3/4 | 2 13/16 | NCT209-27E | T209E | NC209-27 NC209-28 NC209 | 2.8 | |
| | 49 | 17.5 | 35 | 117 | 101.6 | 83 | 144 | 87 | 16 | 83 | 29 | 19 | 49 | 50.8 | 19 | 71.4 | NCT209-28E | | | | |
| | | | | | | | | | | | | | | | | | | | | | NCT209E |
| 50 1 15/16 2 | 1 15/16 | 11/16 | 1 15/32 | 4 19/32 | 4 | 3 9/32 | 5 7/8 | 3 17/32 | 5/8 | 3 3/8 | 1 5/32 | 3/4 | 1 15/16 | 2 3/32 | 0 3/4 | 3 3/8 | NCT210-31E | T210E | NC210-31 NC210 | 3.2 | |
| | 49 | 17.5 | 37 | 117 | 101.6 | 83 | 149 | 90 | 16 | 86 | 29 | 19 | 49 | 53.1 | 19 | 85.7 | NCT210E | | | | |
| 55 2 2 3/16 | 2 17/32 | 1 1/16 | 1 1/2 | 5 3/4 | 5 1/8 | 4 1/32 | 6 23/32 | 4 3/16 | 3/4 | 3 3/4 | 1 3/8 | 31/32 | 2 17/32 | 2 1/4 | 0 7/8 | 3 1/2 | NCT211-32E | T211E | NC211-32 | 4.4 | |
| | 64 | 27 | 38 | 146 | 130.17 | 102 | 171 | 106 | 19 | 95 | 35 | 25 | 64 | 57.1 | 22.2 | 88.9 | NCT211E | | | | |
| | | | | | | | | | | | | | | | | | | | | | NCT211-35E |
| 60 2 1/4 2 7/16 | 2 17/32 | 1 1/16 | 1 21/32 | 5 3/4 | 5 1/8 | 4 1/32 | 7 5/8 | 4 11/16 | 3/4 | 4 1/32 | 1 3/8 | 1 1/4 | 2 17/32 | 2 5/8 | 1 | 4 1/16 | NCT212-36E | T212E | NC212-36 | 5.6 | |
| | 64 | 27 | 42 | 146 | 130.17 | 102 | 194 | 119 | 19 | 102 | 35 | 32 | 64 | 66.7 | 25.4 | 103.2 | NCT212E | | | | |
| | | | | | | | | | | | | | | | | | | | | | NCT212-39E |

Cap Screw Tightening Torque (recommended)

| Bore diam. | Cap Srew size | Recommended N-m | Max. N-m |
|------------|-----------------------|-----------------|----------|
| 20 - 30 mm | M4 x0,7 or No.8-32UNC | 4,2 - 4,6 | 4,9 |
| 35 - 45 mm | M5x0,8 or No.10-24UNC | 8,8 - 9,8 | 10 |
| 50 - 55 mm | M6 x1 or 1/4-20UNC | 15,2 - 16,8 | 17 |
| 60 mm | M8x1,25 or 5/16-18UNC | 38 - 42 | 44 |

Note

- See our general BBU catalogue No BS006EN-ODS for more technical information.
- For the NC series steel and cast iron covers are not applicable.
- Special grease filling only on inquiry basis.

Formerly sold as



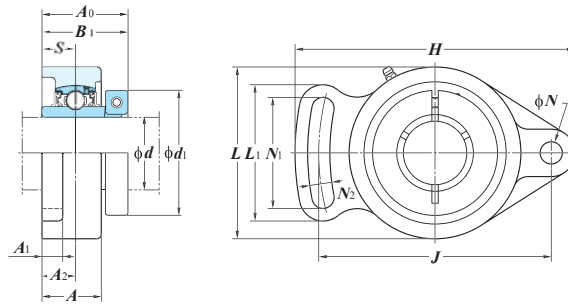
Adjustable rhombic – flanged type units EasyFit NC-series



NCFA

Cylindrical bore (with concentric locking collar)

d 20 ~ 55 mm



| Shaft Dia. mm inch | Dimensions inch mm | | | | | | | | | | | | | | | Bolt Size inch mm | Unit No. | Housing No. | Bearing No. | Mass kg |
|--|--------------------------|---------|---------|---------|-------|----------------|----------------|----------------|----------------|----------------|----------------|----------------|---------|---------|------|---|-------------|---|----------------|------------|
| | H | L | A | J | N | N ₁ | N ₂ | L ₁ | A ₁ | A ₂ | A ₀ | B ₁ | S | d1 | | | | | | |
| 20 3/4 | 3 55/64 | 2 21/64 | 15/16 | 3 5/64 | 25/64 | 1 37/64 | 25/64 | 1 31/32 | 7/16 | 35/64 | 1 11/32 | 1 9/32 | 0 1/2 | 1 3/4 | 5/16 | NCFA204-12 NCFA204 | FA204 | NC204-12 NC204 | 0.56 | |
| | 98 | 59 | 24 | 78 | 10 | 40 | 10 | 50 | 11 | 13.8 | 34 | 32.5 | 12.7 | 44.5 | M8 | | | | | |
| 25 7/8 15/16 1 | 4 7/8 | 2 3/4 | 1 1/16 | 3 55/64 | 7/16 | 1 59/64 | 7/16 | 2 33/64 | 33/64 | 0 5/8 | 1 1/2 | 1 7/16 | 0 9/16 | 1 15/16 | 3/8 | NCFA205-14 NCFA205-15 NCFA205 NCFA205-16 | FA205 | NC205-14 NC205-15 NC205 NC205-16 | 0.88 | |
| | 124 | 70 | 27 | 98 | 11 | 49 | 11 | 64 | 13 | 16 | 38 | 36.5 | 14.3 | 49.2 | M10 | | | | | |
| | 141 | 83 | 30 | 117 | 11 | 56 | 12 | 68 | 13 | 17.8 | 42 | 39.7 | 15.9 | 55.6 | M10 | | | | | |
| 30 1 1/8 1 3/16 1 1/4 | 5 35/64 | 3 17/64 | 1 3/16 | 4 39/64 | 7/16 | 2 13/64 | 15/32 | 2 43/64 | 33/64 | 45/64 | 1 21/32 | 1 9/16 | 0 5/8 | 2 3/16 | 3/8 | NCFA206-18 NCFA206 NCFA206-19 NCFA206-20 | FA206 | NC206-18 NC206 NC206-19 NC206-20 | 1.18 | |
| | 141 | 83 | 30 | 117 | 11 | 56 | 12 | 68 | 13 | 17.8 | 42 | 39.7 | 15.9 | 55.6 | M10 | | | | | |
| | 155 | 96 | 34 | 130 | 13 | 63 | 13 | 75 | 14 | 18.6 | 46 | 44.5 | 17.5 | 61.9 | M12 | | | | | |
| 35 1 1/4 1 5/16 1 3/8 1 7/16 | 6 7/64 | 3 25/32 | 1 11/32 | 5 1/8 | 33/64 | 2 31/64 | 33/64 | 2 61/64 | 35/64 | 47/64 | 1 13/16 | 1 3/4 | 0 11/16 | 2 7/16 | 7/16 | NCFA207-20 NCFA207-22 NCFA207 NCFA207-23 | FA207 | NC207-21 NC207-22 NC207 NC207-23 | 1.82 | |
| | 155 | 96 | 34 | 130 | 13 | 63 | 13 | 75 | 14 | 18.6 | 46 | 44.5 | 17.5 | 65.1 | M12 | | | | | |
| | 171 | 105 | 38 | 144 | 13 | 70 | 13 | 84 | 14 | 20.8 | 53 | 50.8 | 19 | 68.3 | M12 | | | | | |
| 40 1 1/2 1 9/16 | 6 47/64 | 4 9/64 | 1 1/2 | 5 43/64 | 33/64 | 2 3/4 | 33/64 | 3 5/16 | 35/64 | 13/16 | 2 3/32 | 2 | 0 3/4 | 2 11/16 | 7/16 | NCFA208-24 NCFA208 | FA208 | NC208-24 NC208-25 NC208 | 2.26 | |
| | 171 | 105 | 38 | 144 | 13 | 70 | 13 | 84 | 14 | 20.8 | 53 | 50.8 | 19 | 68.3 | M12 | | | | | |
| | 179 | 111 | 40 | 148 | 15 | 72 | 15 | 88 | 14 | 21.8 | 54 | 50.8 | 19 | 71.4 | M14 | | | | | |
| 45 1 5/8 1 11/16 1 3/4 | 7 3/64 | 4 3/8 | 1 37/64 | 5 53/64 | 19/32 | 2 53/64 | 19/32 | 3 15/32 | 35/64 | 55/64 | 2 1/8 | 2 | 0 3/4 | 2 13/16 | 1/2 | NCFA209-26 NCFA209-27 NCFA209-28 NCFA209 | FA209 | NC209-26 NC209-27 NC209-28 NC209 | 2.12 | |
| | 179 | 111 | 40 | 148 | 15 | 72 | 15 | 88 | 14 | 21.8 | 54 | 50.8 | 19 | 74.6 | M14 | | | | | |
| | 179 | 111 | 40 | 148 | 15 | 72 | 15 | 88 | 14 | 21.8 | 54 | 50.8 | 19 | 74.6 | M14 | | | | | |
| 50 1 7/8 1 15/16 2 | 7 7/16 | 4 9/16 | 1 37/64 | 6 3/16 | 19/32 | 2 61/64 | 19/32 | 3 5/8 | 35/64 | 57/64 | 2 1/4 | 2 3/32 | 0 3/4 | 3 3/8 | 1/2 | NCFA210-31 NCFA210 NCFA210-32 | FA210 | NC210-30 NC210-31 NC210 NC210-32 | 2.6 | |
| | 189 | 116 | 40 | 157 | 15 | 75 | 15 | 92 | 14 | 22.5 | 57 | 53.1 | 19 | 85.7 | M14 | | | | | |
| | 216 | 133 | 44 | 184 | 16 | 86 | 16 | 102 | 20 | 25.7 | 61 | 57.1 | 22.2 | 88.9 | M14 | | | | | |
| 55 2 2 1/8 2 3/16 | 8 1/2 | 5 15/16 | 1 47/64 | 7 1/4 | 5/8 | 3 25/64 | 5/8 | 4 1/64 | 25/32 | 1 1/64 | 2 13/32 | 2 1/4 | 0 7/8 | 3 1/2 | 1/2 | NCFA211-32 NCFA211 NCFA211-35 | FA211 | NC211-32 NC211-34 NC211 NC211-35 | 3.9 | |
| | 216 | 133 | 44 | 184 | 16 | 86 | 16 | 102 | 20 | 25.7 | 61 | 57.1 | 22.2 | 88.9 | M14 | | | | | |
| | 216 | 133 | 44 | 184 | 16 | 86 | 16 | 102 | 20 | 25.7 | 61 | 57.1 | 22.2 | 92.1 | M14 | | | | | |

Cap Screw Tightening Torque (recommended)

| Bore diam. | Cap Screw size | Recommended N-m | Max. N-m |
|------------|-----------------------|-----------------|----------|
| 20 - 30 mm | M4 x0,7 or No.8-32UNC | 4,2 - 4,6 | 4,9 |
| 35 - 45 mm | M5x0,8 or No.10-24UNC | 8,8 - 9,8 | 10 |
| 50 - 55 mm | M6 x1 or 1/4-20UNC | 15,2 - 16,8 | 17 |
| 60 mm | M8x1,25 or 5/16-18UNC | 38 - 42 | 44 |

Note

- See our general BBU catalogue No BS006EN-ODS for more technical information.
- For the NC series steel and cast iron covers are not applicable.
- Special grease filling only on inquiry basis.

Formerly sold as

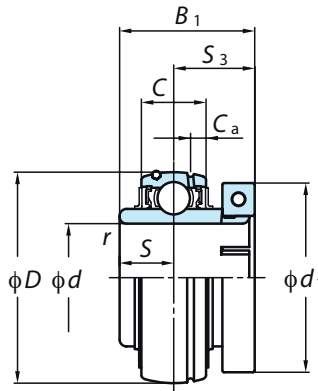


Ball bearing inserts EasyFit NC-series

NC

Cylindrical bore and spherical outer diameter (with concentric locking collar)

d 20 ~ 60 mm



| Shaft Dia mm inch | Dimensions inch mm | | | | Basic Load Ratings kN | | Factor f_0 | Bearing No. | Collar No. | Dimensions inch mm | | | | Cap screw inch mm | Mass kg |
|---------------------------------|--------------------------|--------|---------|--------|-----------------------------|-------|-----------------|---|---|--------------------------|---------|---------|---------|--|--------------|
| | d | D | B_1 | C | r | C_r | | | | C_{or} | C_a | S | S_3 | | |
| 20 3/4 | 1 27/32 | 1 9/32 | 0 5/8 | 0 3/64 | 12.8 | 6.65 | 13.2 | NC204-12 NC204 | UCL204B UCL204B | 0 5/32 | 0 1/2 | 0 25/32 | 1 3/4 | No.8-32UNC M4x0.7 | 0.30 |
| | 47 | 32.5 | 16 | 1 | | | | | | 4 | 12.7 | 19.8 | 44.5 | | |
| 25 7/8 15/16 1 | 2 3/64 | 1 7/16 | 0 43/64 | 0 3/64 | 14.0 | 7.85 | 13.9 | NC205-14 NC205-15 NC205 NC205-16 | UCL205A UCL205A UCL205AM UCL205A | 0 13/64 | 0 9/16 | 0 7/8 | 1 15/16 | No.8-32UNC No.8-32UNC M4x0.7 No.8-32UNC | 0.40 |
| | 52 | 36.5 | 17 | 1 | | | | | | 5 | 14.3 | 22.2 | 49.2 | | |
| | 62 | 39.7 | 19 | 1 | | | | | | 5 | 15.9 | 23.8 | 55.6 | | |
| 30 1 1/8 1 3/16 1 1/4 | 2 7/16 | 1 9/16 | 0 3/4 | 0 3/64 | 19.5 | 11.3 | 13.9 | NC206-18 NC206 NC206-19 NC206-20 | UCL206A UCL206AM UCL206A UCL206A | 0 13/64 | 0 5/8 | 0 15/16 | 2 3/16 | No.8-32UNC M4x0.7 No.8-32UNC No.8-32UNC | 0.50 |
| | 62 | 39.7 | 19 | 1 | | | | | | 5 | 15.9 | 23.8 | 55.6 | | |
| | 72 | 44.5 | 20 | 1.1 | | | | | | 5.5 | 17.5 | 27 | 61.9 | | |
| 35 1 1/4 1 3/8 1 7/16 | 2 53/64 | 1 3/4 | 0 25/32 | 0 3/64 | 25.7 | 15.4 | 13.9 | NC207-20 NC207-22 NC207 NC207-23 | UCL207A UCL207B UCL207BM UCL207B | 0 7/32 | 0 11/16 | 1 1/16 | 2 7/16 | No.10-24UNC M5x0.8 No.10-24UNC | 0.80 0.80 |
| | 72 | 44.5 | 20 | 1.1 | | | | | | 5.5 | 17.5 | 27 | 65.1 | | |
| | 85 | 50.8 | 22 | 1.1 | | | | | | 6 | 19 | 31.8 | 71.4 | | |
| 40 1 1/2 | 3 5/32 | 2 | 0 53/64 | 0 3/64 | 29.1 | 17.8 | 14.0 | NC208-24 NC208 | UCL208A UCL208AM | 0 15/64 | 0 3/4 | 1 1/4 | 2 11/16 | No.10-24UNC M5x0.8 | 1.0 |
| | 80 | 50.8 | 21 | 1.1 | | | | | | 6 | 19 | 31.8 | 68.3 | | |
| | 85 | 50.8 | 22 | 1.1 | | | | | | 6 | 19 | 31.8 | 71.4 | | |
| 45 1 5/8 1 11/16 1 3/4 | 3 11/32 | 2 | 0 55/64 | 0 3/64 | 34.1 | 21.3 | 14.0 | NC209-26 NC209-27 NC209-28 NC209 | UCL209A UCL209B UCL209B UCL209BM | 0 15/64 | 0 3/4 | 1 1/4 | 2 13/16 | No.10-24UNC No.10-24UNC M5x0.8 | 1.1 1.1 |
| | 85 | 50.8 | 22 | 1.1 | | | | | | 6 | 19 | 31.8 | 74.6 | | |
| | 90 | 53.1 | 24 | 1.1 | | | | | | 6 | 19 | 34.1 | 85.7 | | |
| 50 1 15/16 2 | 3 35/64 | 2 3/32 | 0 15/16 | 0 3/64 | 35.1 | 23.3 | 14.4 | NC210-31 NC210 NC210-32 | UCL210A UCL210AM UCL210A | 0 15/64 | 0 3/4 | 1 11/32 | 3 3/8 | 1/4-20UNC M6x1 1/4-20UNC | 1.4 |
| | 90 | 53.1 | 24 | 1.1 | | | | | | 6 | 19 | 34.1 | 85.7 | | |
| | 100 | 57.1 | 25 | 1.5 | | | | | | 7 | 22.2 | 34.9 | 88.9 | | |
| 55 2 2 3/16 | 3 15/16 | 2 1/4 | 0 63/64 | 0 1/16 | 43.4 | 29.4 | 14.4 | NC211-32 NC211 NC211-35 | UCL211A UCL211BM UCL211B | 0 9/32 | 0 7/8 | 1 3/8 | 3 1/2 | 1/4-20UNC M6x1 1/4-20UNC | 1.5 1.5 |
| | 100 | 57.1 | 25 | 1.5 | | | | | | 7 | 22.2 | 34.9 | 92.1 | | |
| | 100 | 57.1 | 25 | 1.5 | | | | | | 7 | 22.2 | 34.9 | 92.1 | | |
| 60 2 1/4 2 7/16 | 4 21/64 | 2 5/8 | 1 1/16 | 0 1/16 | 52.4 | 36.2 | 14.4 | NC212-36 NC212 NC212-39 | UCL212A UCL212BM UCL212B | 0 19/64 | 1 | 1 5/8 | 4 1/16 | 5/16-18UNC M8x1.25 5/16-18UNC | 2.2 2.2 |
| | 110 | 66.7 | 27 | 1.5 | | | | | | 7.5 | 25.4 | 41.3 | 103.2 | | |
| 110 | 66.7 | 27 | 1.5 | 52.4 | 36.2 | 14.4 | NC212 | UCL212BM | 0 19/64 | 1 | 1 5/8 | 4 1/8 | M8x1.25 | 2.2 | |

Cap Screw Tightening Torque (recommended)

| Bore diam. | Cap Screw size | Recommended N-m | Max. N-m |
|------------|-----------------------|-----------------|----------|
| 20 - 30 mm | M4 x0,7 or No.8-32UNC | 4,2 - 4,6 | 4,9 |
| 35 - 45 mm | M5x0,8 or No.10-24UNC | 8,8 - 9,8 | 10 |
| 50 - 55 mm | M6 x1 or 1/4-20UNC | 15,2 - 16,8 | 17 |
| 60 mm | M8x1,25 or 5/16-18UNC | 38 - 42 | 44 |

Note

- See our general BBU catalogue No BS006EN-ODS for more technical information.
- For the NC series steel and cast iron covers are not applicable.
- Special grease filling only on inquiry basis.

Formerly sold as

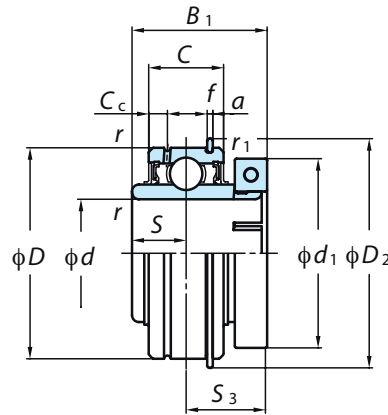
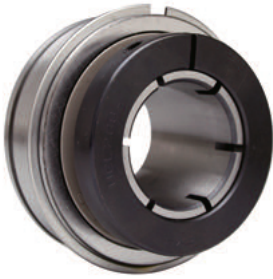


Ball bearing inserts EasyFit NC-series

NC-ERC

Cylindrical bore with cylindrical outer diameter + snapping (with concentric locking collar)

d 20 ~ 60 mm



| Shaft Dia mm inch | | Dimensions | | | | | | | | | | | | | | Bearing No. | Mass kg | | | |
|----------------------|--------|------------|---------|----|---------|-----|--------|----------------------|--------|----------------|---------|------|--------|------|--------|-------------|------------|---|------|------|
| | | D | | C | | r | | r ₁ (min) | | C _c | | a | | f | | | | D ₂ | | |
| d | | mm | inch | mm | inch | mm | inch | mm | inch | mm | inch | mm | inch | mm | inch | mm | inch | | | |
| 20 | 3/4 | 47 | 1 27/32 | 16 | 0 5/8 | 1 | 0 3/64 | 0.5 | 0 1/64 | 4 | 0 5/32 | 2.38 | 0 3/32 | 1.07 | 0 3/64 | 52.5 | 2 1/16 | NC-ERC204-12 NC-ERC204 | 0.36 | |
| | 7/8 | 52 | 2 3/64 | 19 | 0 3/4 | 1 | 0 3/64 | 0.5 | 0 1/64 | 5 | 0 13/64 | 2.38 | 0 3/32 | 1.07 | 0 3/64 | 57.7 | 2 17/64 | NC-ERC205-14 NC-ERC205-15 NC-ERC205 | | 0.47 |
| 25 | 1 1/16 | 62 | 2 7/16 | 22 | 0 55/64 | 1 | 0 3/64 | 0.5 | 0 1/64 | 5.5 | 0 7/32 | 3.18 | 0 1/8 | 1.65 | 0 1/16 | 67.5 | 2 21/32 | NC-ERC206-18 NC-ERC206 NC-ERC206-19 NC-ERC206-20 | 0.57 | |
| | 1 3/16 | 72 | 2 53/64 | 24 | 0 15/16 | 1.1 | 0 3/64 | 0.5 | 0 1/64 | 5.5 | 0 7/32 | 3.18 | 0 1/8 | 1.65 | 0 1/16 | 78.4 | 3 3/32 | NC-ERC207-20 NC-ERC207-22 NC-ERC207 | | 0.95 |
| | 1 1/4 | 72 | 2 53/64 | 24 | 0 15/16 | 1.1 | 0 3/64 | 0.5 | 0 1/64 | 5.5 | 0 7/32 | 3.18 | 0 1/8 | 1.65 | 0 1/16 | 78.4 | 3 3/32 | NC-ERC207-23 | | |
| 30 | 1 1/2 | 80 | 3 5/32 | 28 | 1 7/64 | 1.1 | 0 3/64 | 0.5 | 0 1/64 | 6 | 0 15/64 | 3.18 | 0 1/8 | 1.65 | 0 1/16 | 86.4 | 3 13/32 | NC-ERC208-24 NC-ERC208 | 1.2 | |
| | 1 5/8 | 85 | 3 11/32 | 28 | 1 7/64 | 1.1 | 0 3/64 | 0.5 | 0 1/64 | 6 | 0 15/64 | 3.18 | 0 1/8 | 1.65 | 0 1/16 | 91.4 | 3 19/32 | NC-ERC209-26 NC-ERC209-27 NC-ERC209-28 NC-ERC209 | | 1.3 |
| | 1 3/4 | 85 | 3 11/32 | 28 | 1 7/64 | 1.1 | 0 3/64 | 0.5 | 0 1/64 | 6 | 0 15/64 | 3.18 | 0 1/8 | 1.65 | 0 1/16 | 91.4 | 3 19/32 | | | |
| 35 | 1 7/16 | 90 | 3 35/64 | 28 | 1 7/64 | 1.1 | 0 3/64 | 0.5 | 0 1/64 | 7.5 | 0 19/64 | 3.18 | 0 1/8 | 2.41 | 0 3/32 | 96.3 | 3 51/64 | NC-ERC210-31 NC-ERC210 NC-ERC210-32 | 1.6 | |
| | 2 | 100 | 3 15/16 | 30 | 1 3/16 | 1.5 | 0 1/16 | 0.5 | 0 1/64 | 7.5 | 0 19/64 | 3.18 | 0 1/8 | 2.41 | 0 3/32 | 106.3 | 4 3/16 | NC-ERC211-32 NC-ERC211 NC-ERC211-35 | | 1.8 |
| | 2 3/16 | 100 | 3 15/16 | 30 | 1 3/16 | 1.5 | 0 1/16 | 0.5 | 0 1/64 | 7.5 | 0 19/64 | 3.18 | 0 1/8 | 2.41 | 0 3/32 | 106.3 | 4 3/16 | | | |
| 40 | 2 1/4 | 110 | 4 21/64 | 32 | 1 17/64 | 1.5 | 0 1/16 | 0.5 | 0 1/64 | 7.5 | 0 19/64 | 3.18 | 0 1/8 | 2.41 | 0 3/32 | 116.4 | 4 37/64 | NC-ERC212-36 NC-ERC212 NC-ERC212-39 | 2.5 | |
| | 2 7/16 | | | | | | | | | | | | | | | | | | | |
| | | | | | | | | | | | | | | | | | | | | |

Note : See NC insert series for additional dimensions and load ratings.

Cap Screw Tightening Torque (recommended)

| Bore diam. | Cap Screw size | Recommended N-m | Max. N-m |
|------------|-----------------------|-----------------|----------|
| 20 - 30 mm | M4 x0,7 or No.8-32UNC | 4,2 - 4,6 | 4,9 |
| 35 - 45 mm | M5x0,8 or No.10-24UNC | 8,8 - 9,8 | 10 |
| 50 - 55 mm | M6 x1 or 1/4-20UNC | 15,2 - 16,8 | 17 |
| 60 mm | M8x1,25 or 5/16-18UNC | 38 - 42 | 44 |

Note

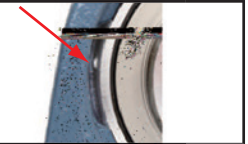
- See our general BBU catalogue No BS006EN-ODS for more technical information.
- For the NC series steel and cast iron covers are not applicable.
- Special grease filling only on inquiry basis.

Formerly sold as



S3 P11

The anti-rotation pin, in conjunction with the standard "J" fit housing, means very secure housing fit in high speed applications.



Note: BBU's are 100% noise tested, fit for blower applications.

Recommended shaft tolerance for blower use

Dimensional tolerance of shaft used for NC-bearings for blowers.

unit: μm

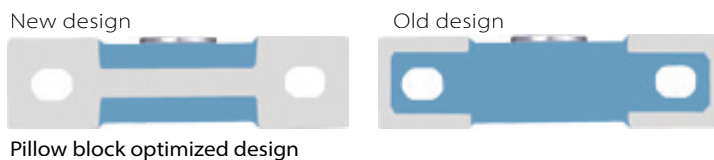
| Shaft dia. (mm) | | Dimensional tolerance of shaft | | | |
|--------------------|-------|--------------------------------|------|------|------|
| | | h5 | | j5 | |
| Over | Incl. | Max. | Min. | Max. | Min. |
| 10 | 18 | 0 | - 8 | +5 | - 3 |
| 18 | 30 | 0 | - 9 | +5 | - 4 |
| 30 | 50 | 0 | -11 | +6 | - 5 |
| 50 | 80 | 0 | -13 | +6 | - 7 |
| 80 | 120 | 0 | -15 | +6 | - 9 |
| 120 | 180 | 0 | -18 | +7 | -11 |

Three Major Earlier Improvements

Koyo's new EasyFit NC BBU's also incorporate three major improvements that were introduced earlier to the whole BBU range.

1. New Optimized Performance design

Pillow Block Housing with flat bottom face containing no recess. The optimized performance design ensures a more secure and firm mounting of the pillow block on a frame. No vibration occurs because there is no clearance between the housing and the frame. The removal of conventional ribs of both sides and the increase of bolt area improved the workability. This is an epoch-making new housing that has enabled a 30% increase in strength despite of the removal of the ribs and a 7% lower weight.



2. New Seal Design for high performance lubrication

The new design seals have an inward facing lip which allows grease to flow back towards the balls and raceway during operation thereby improving lubrication performance and extending bearing life.



Fig. 3: New seal design for lubrication

3. Upgrade in Lithium Bearing Grease

Upgrade in Lithium Bearing Grease → → → **High Load - Extreme pressure - Water Resistant.**

Our ball bearing units are supplied with high quality Lithium Bearing grease and seals. The NLGI 2 lithium complex grease provides substantial improvements over general lithium soap based lubricants. It functions extremely well under a variety of high demanding operating conditions including wide temperature ranges, variable speeds, water contamination, vibration, extreme pressure, heavy- and shock loads. This Lithium grease is also compatible with the existing grease formula.

Note: For more details about Koyo's new JHS generation of BBU's please see the flyer: JHS-3i New Pillow Blocks

Formerly sold as



European Bearings Network

JTEKT Europe Bearings BV
European Headquarters and Central Warehouse
Markerkant 13-01
1314 AL Almere, The Netherlands
☎ +31 (0)36 538 3333
✉ info-eu@jtekt.eu

JTEKT Europe Bearings B.V. – Italian Branch Office
Territory: Italy
Via G. Stephenson 43a
20157 Milano, Italy
☎ +39 (0)22 951 0844
✉ info-eu@jtekt.eu

JTEKT Sales UK Ltd.
Territory: United Kingdom & Ireland
Whitehall Avenue, Kingston, Milton Keynes
Buckinghamshire MK10 OAX, U.K.
☎ +44 (0)19 082 89300
✉ info-eu@jtekt.eu

JTEKT Europe Bearings B.V. – Scandinavian Branch Office
Territory: Sweden, Norway & Finland
Kanalvägen 5a
19461 Upplands-Väsby, Sweden
☎ +46 (0)85 942 1210
✉ info-eu@jtekt.eu

JTEKT Europe Bearings B.V.
Romanian Representative Office
Territory: Romania, Greece & Israel
Str. Vasile Vasilevici Stroescu nr 8, apt. 2, sector 2
021274 Bucuresti, Romania
☎ +40 (0) 217941819 / +40 (0) 217944034
☎ +40 (0) 744.423.561
✉ carmen.berbecaru@jtekt.eu (Romanian territory)
✉ mariabianca.predut@jtekt.eu (Israeli & Greek territory)

JTEKT Sales Deutschland GmbH
Territory: Germany, Austria, Switzerland, Denmark, Turkey, Poland, Ukraine,
Bulgaria, Czech Republic, Hungary, Serbia & Montenegro, Croatia, Slovakia,
Slovenia, Bosnia & Herzegovina, Latvia, Estonia, Lithuania and Macedonia
Bargkoppelweg 4
22145 Hamburg, Germany
☎ +49 (0)40 679 0900
✉ info-eu@jtekt.eu

JTEKT Sales France S.A.
Territory: France, Algeria, Morocco & Tunisia
Working address: 55 Avenue de Colmar
92500 Rueil-Malmaison, France
☎ +33 (0)14 139 8000
✉ info-eu@jtekt.eu

JTEKT Europe Bearings B.V. – Iberian Branch Office
Territory: Spain & Portugal
Avenida de la industria 52
28823 Coslada (Madrid), Spain
☎ +34 (0)91 329 0818
✉ info-eu@jtekt.eu

JTEKT Poland Branch Office
3. Maja 14
41-200 Sosnowiec, Poland
☎ +48 (0)32 746 7777
✉ info-eu@jtekt.eu

